

Cytokeratin 9 Antibody

Rabbit mAb

Catalog # AP90811

Product Information

Application	WB, IHC, IP
Primary Accession	P35527
Reactivity	Rat, Human, Mouse
Clonality	Monoclonal
Other Names	CK 9; Cytokeratin 9; EPPK; K9; Keratin 9; Keratin; Keratin type I cytoskeletal 9; Keratin9; KRT 9; type I cytoskeletal 9;
Isotype	Rabbit IgG
Host	Rabbit
Calculated MW	62064

Additional Information

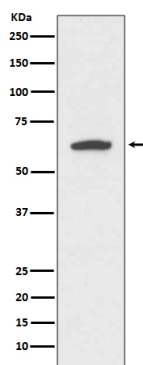
Dilution	WB 1:1000~1:2000 IHC 1:50~1:200 IP 1:50
Purification	Affinity-chromatography
Immunogen	A synthesized peptide derived from human Cytokeratin 9
Description	May serve an important special function either in the mature palmar and plantar skin tissue or in the morphogenetic program of the formation of these tissues. Plays a role in keratin filament assembly.
Storage Condition and Buffer	Rabbit IgG in phosphate buffered saline , pH 7.4, 150mM NaCl, 0.02% sodium azide and 50% glycerol. Store at +4°C short term. Store at -20°C long term. Avoid freeze / thaw cycle.

Protein Information

Name	KRT9
Function	May serve an important special function either in the mature palmar and plantar skin tissue or in the morphogenetic program of the formation of these tissues. Plays a role in keratin filament assembly.
Tissue Location	Expressed in the terminally differentiated epidermis of palms and soles.

Images

Western blot analysis of Cytokeratin 9 expression in HeLa cell lysate.



Please note: All products are 'FOR RESEARCH USE ONLY. NOT FOR USE IN DIAGNOSTIC OR THERAPEUTIC PROCEDURES'.