

# Cytokeratin 2e Antibody

Rabbit mAb

Catalog # AP90810

## Product Information

<b>Application</b>	WB, IHC
<b>Primary Accession</b>	<a href="#">P35908</a>
<b>Reactivity</b>	Human
<b>Clonality</b>	Monoclonal
<b>Other Names</b>	CK 2e; Cytokeratin-2e; Epithelial keratin-2e; K2e; Keratin type II cytoskeletal 2 epidermal; Keratin-2 epidermis; KRT2; KRT2A; KRT2E; Type-II keratin Kb2;
<b>Isotype</b>	Rabbit IgG
<b>Host</b>	Rabbit
<b>Calculated MW</b>	65433

## Additional Information

<b>Dilution</b>	WB 1:1000~1:2000 IHC 1:50~1:200
<b>Purification</b>	Affinity-chromatography
<b>Immunogen</b>	A synthesized peptide derived from human Cytokeratin 2e
<b>Description</b>	Probably contributes to terminal cornification. Associated with keratinocyte activation, proliferation and keratinization.
<b>Storage Condition and Buffer</b>	Rabbit IgG in phosphate buffered saline , pH 7.4, 150mM NaCl, 0.02% sodium azide and 50% glycerol. Store at +4°C short term. Store at -20°C long term. Avoid freeze / thaw cycle.

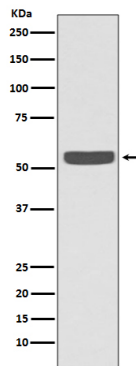
## Protein Information

<b>Name</b>	KRT2
<b>Synonyms</b>	KRT2A, KRT2E
<b>Function</b>	Probably contributes to terminal cornification (PubMed: <a href="#">1380918</a> ). Associated with keratinocyte activation, proliferation and keratinization (PubMed: <a href="#">12598329</a> ). Required for maintenance of corneocytes and keratin filaments in suprabasal keratinocytes in the epidermis of the ear, potentially via moderation of expression and localization of keratins and their partner proteins (By similarity). Plays a role in the establishment of the epidermal barrier on plantar skin (By similarity).
<b>Cellular Location</b>	Cytoplasm.
<b>Tissue Location</b>	Expressed in the upper spinous and granular suprabasal layers of normal adult epidermal tissues from most body sites including thigh, breast nipple, foot sole, penile shaft and axilla. Not present in foreskin, squamous metaplasias and carcinomas Expression in hypertrophic and keloid scars

begins in the deepest suprabasal layer. Weakly expressed in normal gingiva and tongue, however expression is induced in benign keratoses of lingual mucosa and in mild-to-moderate oral dysplasia with orthokeratinization

## Images

---



Western blot analysis of Cytokeratin 2e expression in A431 cell lysate.

Please note: All products are 'FOR RESEARCH USE ONLY. NOT FOR USE IN DIAGNOSTIC OR THERAPEUTIC PROCEDURES'.