

Angiotensinogen Antibody

Rabbit mAb

Catalog # AP90803

Product Information

Application	WB, IF, ICC, IP
Primary Accession	P01019
Reactivity	Human
Clonality	Monoclonal
Other Names	Angiotensinogen; Serpin A8; AGT; SERPINA8; Des-Asp[1]-angiotensin II; Serine (or cysteine) proteinase inhibitor;
Isotype	Rabbit IgG
Host	Rabbit
Calculated MW	52070

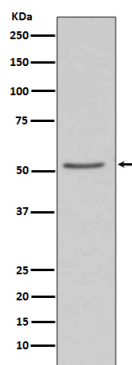
Additional Information

Dilution	WB 1:1000~1:2000 ICC/IF 1:50~1:200 IP 1:50
Purification	Affinity-chromatography
Immunogen	A synthesized peptide derived from human Angiotensinogen
Description	Angiotensin is formed from a precursor, angiotensinogen, which is produced by the liver and found in the α -globulin fraction of plasma. Angiotensin stimulation through AT1 has been shown to activate the JAK/Stat pathway involving a direct interaction between JAK2 and AT1 as demonstrated by co-immunoprecipitation.
Storage Condition and Buffer	Rabbit IgG in phosphate buffered saline , pH 7.4, 150mM NaCl, 0.02% sodium azide and 50% glycerol. Store at +4°C short term. Store at -20°C long term. Avoid freeze / thaw cycle.

Protein Information

Name	AGT (HGNC:333)
Synonyms	SERPINA8
Function	Essential component of the renin-angiotensin system (RAS), a potent regulator of blood pressure, body fluid and electrolyte homeostasis.
Cellular Location	Secreted
Tissue Location	Expressed by the liver and secreted in plasma.

Images



Western blot analysis of Angiotensinogen expression in 293T cell lysate.

Please note: All products are 'FOR RESEARCH USE ONLY. NOT FOR USE IN DIAGNOSTIC OR THERAPEUTIC PROCEDURES'.