

Glycogen synthase Antibody

Rabbit mAb

Catalog # AP90789

Product Information

Application	WB, IHC, IF, FC, ICC, IP, IHF
Primary Accession	P13807
Reactivity	Rat, Human, Mouse
Clonality	Monoclonal
Other Names	Glycogen [starch] synthase; Glycogen synthase 1 (muscle); Glycogen synthase 1; GSY; GYS; Gys1; muscle;
Isotype	Rabbit IgG
Host	Rabbit
Calculated MW	83786

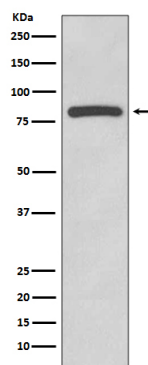
Additional Information

Dilution	WB 1:5000~1:20000 IHC 1:50~1:200 ICC/IF 1:50~1:200 FC 1:50 IP 1:50
Purification	Affinity-chromatography
Immunogen	A synthesized peptide derived from human Glycogen synthase
Description	Glycogen synthase is a key enzyme in the regulation of glycogen synthesis. Transfers glucosyl residue from UDP-glucose to glycogen. Regulated allosterically by glucose-6-phosphate, and by PKA-mediated phosphorylation.
Storage Condition and Buffer	Rabbit IgG in phosphate buffered saline , pH 7.4, 150mM NaCl, 0.02% sodium azide and 50% glycerol. Store at +4°C short term. Store at -20°C long term. Avoid freeze / thaw cycle.

Protein Information

Name	GYS1 (HGNC:4706)
Synonyms	GYS
Function	Glycogen synthase participates in the glycogen biosynthetic process along with glycogenin and glycogen branching enzyme. Extends the primer composed of a few glucose units formed by glycogenin by adding new glucose units to it. In this context, glycogen synthase transfers the glycosyl residue from UDP-Glc to the non-reducing end of alpha-1,4-glucan.
Tissue Location	Expressed in skeletal muscle and most other cell types where glycogen is present.

Images



Western blot analysis of Glycogen synthase expression in HeLa cell lysate.

Please note: All products are 'FOR RESEARCH USE ONLY. NOT FOR USE IN DIAGNOSTIC OR THERAPEUTIC PROCEDURES'.