

Bcl10 Antibody

Rabbit mAb

Catalog # AP90775

Product Information

Application	WB, IHC, IF, ICC, IP, IHF
Primary Accession	O95999
Reactivity	Human
Clonality	Monoclonal
Other Names	B cell CLL/lymphoma 10; B-cell leukemia/lymphoma 10; Bcl10; CARD containing molecule enhancing NF kappa B; CARD like apoptotic protein; Caspase recruiting domain containing protein; cE10; Cellular E10; CIPER; hCLAP; Mammalian CARD-containing adapter molecule E10; R-RCD1;
Isotype	Rabbit IgG
Host	Rabbit
Calculated MW	31 KDa

Additional Information

Dilution	WB 1:1000~1:2000 IHC 1:50~1:200 ICC/IF 1:50~1:200 IP 1:20
Purification	Affinity-chromatography
Immunogen	A synthesized peptide derived from human Bcl10
Description	Promotes apoptosis, pro-caspase-9 maturation and activation of NF-kappa-B via NIK and IKK. May be an adapter protein between upstream TNFR1-TRADD-RIP complex and the downstream NIK-IKK-IKAP complex. Is a substrate for MALT1.
Storage Condition and Buffer	Rabbit IgG in phosphate buffered saline , pH 7.4, 150mM NaCl, 0.02% sodium azide and 50% glycerol. Store at +4°C short term. Store at -20°C long term. Avoid freeze / thaw cycle.

Protein Information

Images

Western blot analysis of Bcl10 expression in (1) HeLa cell lysate; (2) Raji cell lysate.

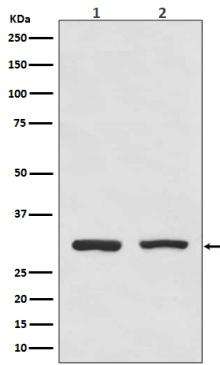


Image not found : 202311/AP90775-IHC.jpg

Immunohistochemical analysis of paraffin-embedded human breast cancer, using Bcl10 Antibody.

Please note: All products are 'FOR RESEARCH USE ONLY. NOT FOR USE IN DIAGNOSTIC OR THERAPEUTIC PROCEDURES'.