

Cytokeratin 4 Antibody

Rabbit mAb

Catalog # AP90774

Product Information

Application	WB, IHC, IF, FC, ICC, IP, IHF
Primary Accession	P19013
Reactivity	Human
Clonality	Monoclonal
Other Names	CK 4; CK-4; CYK4; Cytokeratin4; FLJ31692; K4; Keratin 4; Keratin; Keratin type II cytoskeletal 4; Keratin4; Krt4; type II cytoskeletal 4; Type-II keratin Kb4;
Isotype	Rabbit IgG
Host	Rabbit
Calculated MW	56144

Additional Information

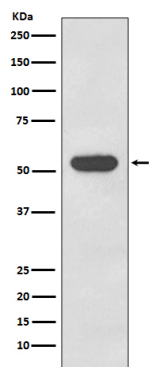
Dilution	WB 1:1000~1:2000 IHC 1:50~1:200 ICC/IF 1:50~1:200 IP 1:50 FC 1:200
Purification	Affinity-chromatography
Immunogen	A synthesized peptide derived from human Cytokeratin 4
Description	Cytokeratins are a subfamily of intermediate filament keratins that are characterized by a remarkable biochemical diversity, which is represented in human epithelial tissues by at least 20 different polypeptides.
Storage Condition and Buffer	Rabbit IgG in phosphate buffered saline , pH 7.4, 150mM NaCl, 0.02% sodium azide and 50% glycerol. Store at +4°C short term. Store at -20°C long term. Avoid freeze / thaw cycle.

Protein Information

Name	KRT4
Synonyms	CYK4
Tissue Location	Detected in the suprabasal layer of the stratified epithelium of the esophagus, exocervix, vagina, mouth and lingual mucosa, and in cells and cell clusters in the mucosa and serous gland ducts of the esophageal submucosa (at protein level). Expressed widely in the exocervix and esophageal epithelium, with lowest levels detected in the basal cell layer.

Images

Western blot analysis of Cytokeratin 4 expression in A431 cell lysate.



Please note: All products are 'FOR RESEARCH USE ONLY. NOT FOR USE IN DIAGNOSTIC OR THERAPEUTIC PROCEDURES'.