

pro Caspase 3 Antibody

Rabbit mAb

Catalog # AP90749

Product Information

Application	WB, IHC, IF, FC, ICC, IP, IHF
Primary Accession	P42574
Reactivity	Human, Mouse
Clonality	Monoclonal
Other Names	Yama; CASP3; Caspase 3; CPP32; Caspase 3 apoptosis related cysteine peptidase; CPP32B; Procaspace 3; SCA 1; SCA1; Yama protein;
Isotype	Rabbit IgG
Host	Rabbit
Calculated MW	31608

Additional Information

Dilution	WB 1:1000~1:2000 IHC 1:50~1:200 ICC/IF 1:50~1:200 IP 1:50 FC 1:50
Purification	Affinity-chromatography
Immunogen	A synthesized peptide derived from human pro Caspase 3
Description	Caspases are a family of cytosolic aspartate specific cysteine proteases. Involved in the activation cascade of caspases responsible for apoptosis execution. Cleaved Caspase 10 leads to the processing of Caspase 3 and Caspase 7, initiating a caspase cascade and subsequent apoptosis.
Storage Condition and Buffer	Rabbit IgG in phosphate buffered saline , pH 7.4, 150mM NaCl, 0.02% sodium azide and 50% glycerol. Store at +4°C short term. Store at -20°C long term. Avoid freeze / thaw cycle.

Protein Information

Name	CASP3
Synonyms	CPP32 {ECO:0000303 PubMed:7983002}
Function	Thiol protease that acts as a major effector caspase involved in the execution phase of apoptosis (PubMed: 18723680 , PubMed: 20566630 , PubMed: 23650375 , PubMed: 35338844 , PubMed: 35446120 , PubMed: 7596430). Following cleavage and activation by initiator caspases (CASP8, CASP9 and/or CASP10), mediates execution of apoptosis by catalyzing cleavage of many proteins (PubMed: 18723680 , PubMed: 20566630 , PubMed: 23650375 , PubMed: 7596430). At the onset of apoptosis, it proteolytically cleaves poly(ADP-ribose) polymerase PARP1 at a '216-Asp- -Gly-217' bond (PubMed: 10497198 , PubMed: 16374543 , PubMed: 7596430 , PubMed: 7774019). Cleaves and activates sterol regulatory element binding proteins (SREBPs) between the basic helix-loop-helix leucine zipper domain and the membrane attachment domain (By similarity). Cleaves

and activates caspase-6, -7 and -9 (CASP6, CASP7 and CASP9, respectively) (PubMed:[7596430](#)). Cleaves and inactivates interleukin-18 (IL18) (PubMed:[37993714](#), PubMed:[9334240](#)). Involved in the cleavage of huntingtin (PubMed:[8696339](#)). Triggers cell adhesion in sympathetic neurons through RET cleavage (PubMed:[21357690](#)). Cleaves and inhibits serine/threonine-protein kinase AKT1 in response to oxidative stress (PubMed:[23152800](#)). Acts as an inhibitor of type I interferon production during virus-induced apoptosis by mediating cleavage of antiviral proteins CGAS, IRF3 and MAVS, thereby preventing cytokine overproduction (PubMed:[30878284](#)). Also involved in pyroptosis by mediating cleavage and activation of gasdermin-E (GSDME) (PubMed:[35338844](#), PubMed:[35446120](#)). Cleaves XRCC4 and phospholipid scramblase proteins XKR4, XKR8 and XKR9, leading to promote phosphatidylserine exposure on apoptotic cell surface (PubMed:[23845944](#), PubMed:[33725486](#)). Cleaves BIRC6 following inhibition of BIRC6-caspase binding by DIABLO/SMAC (PubMed:[36758104](#), PubMed:[36758106](#)).

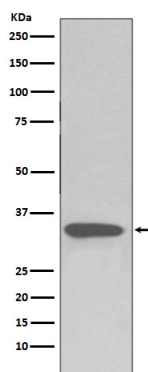
Cellular Location

Cytoplasm.

Tissue Location

Highly expressed in lung, spleen, heart, liver and kidney. Moderate levels in brain and skeletal muscle, and low in testis. Also found in many cell lines, highest expression in cells of the immune system.

Images



Western blot analysis of pro Caspase 3 expression in Jurkat cell lysate.

Image not found : 202311/AP90749-IHC.jpg

Immunohistochemical analysis of paraffin-embedded human colon, using pro Caspase 3 Antibody.

Image not found : 202311/AP90749-IF.jpg

Immunofluorescent analysis of Hela cells, using pro Caspase 3 Antibody.

Please note: All products are 'FOR RESEARCH USE ONLY. NOT FOR USE IN DIAGNOSTIC OR THERAPEUTIC PROCEDURES'.