

BPI Antibody

Rabbit mAb

Catalog # AP90695

Product Information

Application	WB, IF, FC, ICC
Primary Accession	P17213
Reactivity	Human
Clonality	Monoclonal
Other Names	rBPI; BPIFD1; CAP 57; BPI; Bactericidal permeability-increasing protein;
Isotype	Rabbit IgG
Host	Rabbit
Calculated MW	53900

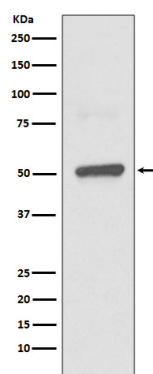
Additional Information

Dilution	WB 1:500~1:2000 ICC/IF 1:50~1:200 FC 1:50
Purification	Affinity-chromatography
Immunogen	A synthesized peptide derived from human BPI
Description	The cytotoxic action of BPI is limited to many species of Gram-negative bacteria; this specificity may be explained by a strong affinity of the very basic N-terminal half for the negatively charged lipopolysaccharides that are unique to the Gram-negative bacterial outer envelope. Has antibacterial activity against the Gram-negative bacterium <i>P.aeruginosa</i> , this activity is inhibited by LPS from <i>P.aeruginosa</i> .
Storage Condition and Buffer	Rabbit IgG in phosphate buffered saline , pH 7.4, 150mM NaCl, 0.02% sodium azide and 50% glycerol. Store at +4°C short term. Store at -20°C long term. Avoid freeze / thaw cycle.

Protein Information

Name	BPI
Function	The cytotoxic action of BPI is limited to many species of Gram-negative bacteria; this specificity may be explained by a strong affinity of the very basic N-terminal half for the negatively charged lipopolysaccharides that are unique to the Gram-negative bacterial outer envelope. Has antibacterial activity against the Gram-negative bacterium <i>P.aeruginosa</i> , this activity is inhibited by LPS from <i>P.aeruginosa</i> .
Cellular Location	Secreted. Cytoplasmic granule membrane Note=Membrane-associated in polymorphonuclear Leukocytes (PMN) granules.
Tissue Location	Restricted to cells of the myeloid series.

Images



Western blot analysis of BPI expression in THP1 lysate.

Please note: All products are 'FOR RESEARCH USE ONLY. NOT FOR USE IN DIAGNOSTIC OR THERAPEUTIC PROCEDURES'.