

MAD2L1BP Antibody

Rabbit mAb

Catalog # AP90690

Product Information

Application	WB, IHC, IF, ICC, IHF
Primary Accession	Q15013
Reactivity	Rat, Human, Mouse
Clonality	Monoclonal
Other Names	Caught by MAD2 protein; CMT2; KIAA0110; MAD2L1 binding protein; MAD2L1-binding protein; MAD2L1BP; MD2BP; MGC11282; RP1-261G23.6;
Isotype	Rabbit IgG
Host	Rabbit
Calculated MW	31052

Additional Information

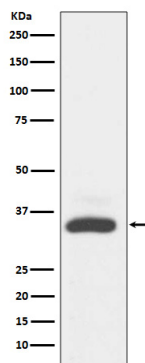
Dilution	WB 1:500~1:2000 IHC 1:50~1:200 ICC/IF 1:50~1:200
Purification	Affinity-chromatography
Immunogen	A synthesized peptide derived from human MAD2L1BP
Description	May function to silence the spindle checkpoint and allow mitosis to proceed through anaphase by binding MAD2L1 after it has become dissociated from the MAD2L1-CDC20 complex.
Storage Condition and Buffer	Rabbit IgG in phosphate buffered saline , pH 7.4, 150mM NaCl, 0.02% sodium azide and 50% glycerol. Store at +4°C short term. Store at -20°C long term. Avoid freeze / thaw cycle.

Protein Information

Name	MAD2L1BP
Synonyms	CMT2, KIAA0110
Function	May function to silence the spindle checkpoint and allow mitosis to proceed through anaphase by binding MAD2L1 after it has become dissociated from the MAD2L1-CDC20 complex.
Cellular Location	Nucleus. Cytoplasm, cytoskeleton, spindle. Note=During early mitosis, unevenly distributed throughout the nucleoplasm. From metaphase to anaphase, concentrated on the spindle

Images

Western blot analysis of MAD2L1BP expression in A431



cell lysate.

Image not found : 202311/AP90690-IHC.jpg

Immunohistochemical analysis of paraffin-embedded human kidney, using MAD2L1BP Antibody.

Please note: All products are 'FOR RESEARCH USE ONLY. NOT FOR USE IN DIAGNOSTIC OR THERAPEUTIC PROCEDURES'.