

MyD88 Antibody

Rabbit mAb

Catalog # AP90684

Product Information

Application	WB, IHC, IF, FC, ICC, IHF
Primary Accession	Q99836
Reactivity	Human
Clonality	Monoclonal
Other Names	Myeloid differentiation primary response protein MyD88; MYD88;
Isotype	Rabbit IgG
Host	Rabbit
Calculated MW	33233

Additional Information

Dilution	WB 1:1000~1:2000 IHC 1:50~1:200 ICC/IF 1:50~1:200 FC 1:100
Purification	Affinity-chromatography
Immunogen	A synthesized peptide derived from human MyD88
Description	Members of the Toll-like receptor (TLR) family, named for the closely related Toll receptor in Drosophila, play a pivotal role in innate immune responses. TLRs recognize conserved motifs found in various pathogens and mediate defense responses. Triggering of the TLR pathway leads to the activation of NF- κ B and subsequent regulation of immune and inflammatory genes.
Storage Condition and Buffer	Rabbit IgG in phosphate buffered saline , pH 7.4, 150mM NaCl, 0.02% sodium azide and 50% glycerol. Store at +4°C short term. Store at -20°C long term. Avoid freeze / thaw cycle.

Protein Information

Name	MYD88 (HGNC:7562)
Function	Adapter protein involved in the Toll-like receptor and IL-1 receptor signaling pathway in the innate immune response (PubMed: 15361868 , PubMed: 18292575 , PubMed: 33718825 , PubMed: 37971847). Acts via IRAK1, IRAK2, IRF7 and TRAF6, leading to NF-kappa-B activation, cytokine secretion and the inflammatory response (PubMed: 15361868 , PubMed: 19506249 , PubMed: 24316379 , PubMed: 40638072). Increases IL-8 transcription (PubMed: 9013863). Involved in IL-18- mediated signaling pathway. Activates IRF1 resulting in its rapid migration into the nucleus to mediate an efficient induction of IFN- beta, NOS2/INOS, and IL12A genes. Upon TLR8 activation by GU-rich single-stranded RNA (GU-rich RNA) derived from viruses such as SARS- CoV-2, SARS-CoV and HIV-1, induces IL1B release through NLRP3 inflammasome activation (PubMed: 33718825). MyD88-mediated signaling in intestinal epithelial cells is crucial for maintenance of gut homeostasis and controls the expression of the antimicrobial lectin REG3G in the small

intestine (By similarity).

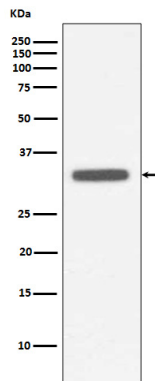
Cellular Location

Cytoplasm. Nucleus

Tissue Location

Ubiquitous..

Images



Western blot analysis of MyD88 expression in Raji cell lysate.

Image not found : 202311/AP90684-IHC.jpg

Immunohistochemical analysis of paraffin-embedded human breast cancer, using MyD88 Antibody.

Image not found : 202311/AP90684-IF.jpg

Immunofluorescent analysis of A549 cells, using MyD88 Antibody.

Please note: All products are 'FOR RESEARCH USE ONLY. NOT FOR USE IN DIAGNOSTIC OR THERAPEUTIC PROCEDURES'.