

# NSE Antibody

Rabbit mAb

Catalog # AP90659

## Product Information

---

<b>Application</b>	WB, IHC, IF, FC, ICC, IHF
<b>Primary Accession</b>	<a href="#">P09104</a>
<b>Reactivity</b>	Rat, Human, Mouse
<b>Clonality</b>	Monoclonal
<b>Other Names</b>	ENO2; ENOG; Enolase 2; enolase 2 (gamma, neuronal); Gamma-enolase; Neural enolase; neuron specific gamma enolase; Neuron-specific enolase; neurone-specific enolase; NSE;
<b>Isotype</b>	Rabbit IgG
<b>Host</b>	Rabbit
<b>Calculated MW</b>	47269

## Additional Information

---

<b>Dilution</b>	WB 1:5000~1:10000 IHC 1:50~1:200 ICC/IF 1:50~1:200 FC 1:50
<b>Purification</b>	Affinity-chromatography
<b>Immunogen</b>	A synthesized peptide derived from human NSE
<b>Description</b>	ENO2 an enzyme with 2-phospho-D-glycerate hydro-lyase activity. One of the three enolase isoenzymes found in mammals. This isoenzyme, a homodimer, is found in mature neurons and cells of neuronal origin. A switch from alpha enolase to gamma enolase occurs in neural tissue during development in rats and primates.
<b>Storage Condition and Buffer</b>	Rabbit IgG in phosphate buffered saline , pH 7.4, 150mM NaCl, 0.02% sodium azide and 50% glycerol. Store at +4°C short term. Store at -20°C long term. Avoid freeze / thaw cycle.

## Protein Information

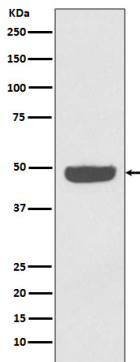
---

<b>Name</b>	ENO2 ( <a href="#">HGNC:3353</a> )
<b>Function</b>	Enolase that catalyzes the conversion of 2-phosphoglycerate to phosphoenolpyruvate in glycolysis and the reverse reaction in gluconeogenesis (By similarity). Has neurotrophic and neuroprotective properties on a broad spectrum of central nervous system (CNS) neurons. Binds, in a calcium-dependent manner, to cultured neocortical neurons and promotes cell survival (By similarity).
<b>Cellular Location</b>	Cytoplasm. Cell membrane. Note=Can translocate to the plasma membrane in either the homodimeric (alpha/alpha) or heterodimeric (alpha/gamma) form
<b>Tissue Location</b>	The alpha/alpha homodimer is expressed in embryo and in most adult

tissues. The alpha/beta heterodimer and the beta/beta homodimer are found in striated muscle, and the alpha/gamma heterodimer and the gamma/gamma homodimer in neurons

## Images

---



Western blot analysis of NSE expression in HeLa cell lysate.

Image not found : 202311/AP90659-IHC.jpg

Immunohistochemical analysis of paraffin-embedded human uterus cancer, using NSE Antibody.

Image not found : 202311/AP90659-IF.jpg

Immunofluorescent analysis of A431 cells, using NSE Antibody.

Please note: All products are 'FOR RESEARCH USE ONLY. NOT FOR USE IN DIAGNOSTIC OR THERAPEUTIC PROCEDURES'.