

Ferritin Antibody

Rabbit mAb

Catalog # AP90651

Product Information

Application	WB, IF, ICC
Primary Accession	P02794/P02792
Reactivity	Rat, Human, Mouse
Clonality	Monoclonal
Other Names	FTH1; Ferritin heavy chain; Ferritin heavy polypeptide 1; FHC; FTHL6; PIG15; PLIF; FTH;
Isotype	Rabbit IgG
Host	Rabbit
Calculated MW	21 kDa

Additional Information

Dilution	WB 1:500~1:2000 ICC/IF 1:50~1:200
Purification	Affinity-chromatography
Immunogen	A synthesized peptide derived from human Ferritin
Description	The assembled ferritin molecule, often referred to as a nanocage, can store up to 4,500 atoms of iron. It forms a holoenzyme of ~450 kDa, consisting of 24 subunits made up of two types of polypeptide chains: ferritin heavy chain and ferritin light chain, each having unique functions. Ferritin heavy chains catalyze the first step in iron storage, the oxidation of Fe(II), whereas ferritin light chains promote the nucleation of ferrihydrite, enabling storage of Fe(III).
Storage Condition and Buffer	Rabbit IgG in phosphate buffered saline , pH 7.4, 150mM NaCl, 0.02% sodium azide and 50% glycerol. Store at +4°C short term. Store at -20°C long term. Avoid freeze / thaw cycle.

Protein Information

Images

Western blot analysis of Ferritin expression in Jurkat cell lysate.

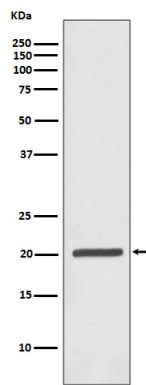


Image not found : 202311/AP90651-IF.jpg

Immunofluorescent analysis of Jurkat cells, using Ferritin Antibody.

Please note: All products are 'FOR RESEARCH USE ONLY. NOT FOR USE IN DIAGNOSTIC OR THERAPEUTIC PROCEDURES'.