

GRK2 Antibody

Rabbit mAb

Catalog # AP90605

Product Information

Application	WB, IHC
Primary Accession	P25098
Reactivity	Rat, Human, Mouse
Clonality	Monoclonal
Other Names	GRK2; BARK1; FLJ16718; BETA-ARK1; ADRBK1;
Isotype	Rabbit IgG
Host	Rabbit
Calculated MW	79574

Additional Information

Dilution	WB 1:500~1:2000 IHC 1:50~1:200
Purification	Affinity-chromatography
Immunogen	A synthesized peptide derived from human GRK2
Description	GRK2 kinase activity and cellular localization are tightly regulated by interactions with activated receptors, G-beta and G-gamma subunits, adaptor proteins, phospholipids, caveolin and calmodulin, as well as by phosphorylation. PKC phosphorylation enhances GRK2 activity by promoting its membrane localization and by abolishing the inhibitory association of calmodulin.
Storage Condition and Buffer	Rabbit IgG in phosphate buffered saline , pH 7.4, 150mM NaCl, 0.02% sodium azide and 50% glycerol. Store at +4°C short term. Store at -20°C long term. Avoid freeze / thaw cycle.

Protein Information

Name	GRK2 (HGNC:289)
Synonyms	ADRBK1, BARK, BARK1
Function	Specifically phosphorylates the agonist-occupied form of the beta-adrenergic and closely related receptors, probably inducing a desensitization of them (PubMed: 19715378). Phosphorylates catecholamine-activated ADRB2 to regulate physiological cardiomyocyte contraction rate responses (By similarity). Also phosphorylates ligand- bound C3a and C5a anaphylatoxin receptors (C3AR1 and C5AR1, respectively), leading to receptor desensitization (PubMed: 21799898 , PubMed: 23077507). Key regulator of LPAR1 signaling (PubMed: 19306925). Competes with RALA for binding to LPAR1 thus affecting the signaling properties of the receptor (PubMed: 19306925). Desensitizes LPAR1 and LPAR2 in a phosphorylation-independent manner (PubMed: 19306925). Positively

regulates ciliary smoothened (SMO)-dependent Hedgehog (Hh) signaling pathway by facilitating the trafficking of SMO into the cilium and the stimulation of SMO activity (By similarity). Inhibits relaxation of airway smooth muscle in response to blue light (PubMed:[30284927](#)).

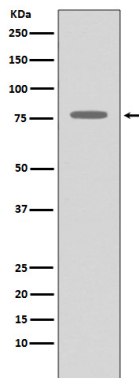
Cellular Location

Cytoplasm {ECO:0000250|UniProtKB:P26817}. Cell membrane {ECO:0000250|UniProtKB:P21146}. Postsynapse {ECO:0000250|UniProtKB:P26817}. Presynapse {ECO:0000250|UniProtKB:P26817}

Tissue Location

Expressed in peripheral blood leukocytes.

Images



Western blot analysis of GRK2 expression in THP-1 cell lysate.

Please note: All products are 'FOR RESEARCH USE ONLY. NOT FOR USE IN DIAGNOSTIC OR THERAPEUTIC PROCEDURES'.