

Tuberin Antibody

Rabbit mAb

Catalog # AP90604

Product Information

Application	WB, IHC, FC
Primary Accession	P49815
Reactivity	Rat, Human, Mouse
Clonality	Monoclonal
Other Names	TSC2; Tuberous sclerosis 2 homolog protein; Tuberous sclerosis 2 protein; Tuberin;
Isotype	Rabbit IgG
Host	Rabbit
Calculated MW	200 KDa

Additional Information

Dilution	WB 1:500~1:2000 IHC 1:50~1:200 FC 1:50
Purification	Affinity-chromatography
Immunogen	A synthesized peptide derived from human Tuberin
Description	Tuberin is a product of the TSC2 tumor suppressor gene and an important regulator of cell proliferation and tumor development. Mutations in either TSC2 or the related TSC1 (hamartin) gene cause tuberous sclerosis complex (TSC), an autosomal dominant disorder characterized by development of multiple, widespread non-malignant tumors. Tuberin is directly phosphorylated at Thr1462 by Akt/PKB. Phosphorylation at Thr1462 and Tyr1571 regulates tuberin-hamartin complexes and tuberin activity.
Storage Condition and Buffer	Rabbit IgG in phosphate buffered saline , pH 7.4, 150mM NaCl, 0.02% sodium azide and 50% glycerol. Store at +4°C short term. Store at -20°C long term. Avoid freeze / thaw cycle.

Protein Information

Images

Western blot analysis of Tuberin expression in Jurkat cell lysate.

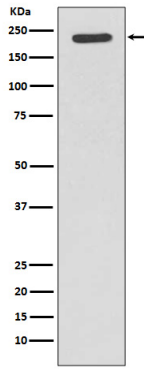


Image not found : 202311/AP90604-IHC.jpg

Immunohistochemical analysis of paraffin-embedded human prostate carcinoma, using Tuberin Antibody.

Please note: All products are 'FOR RESEARCH USE ONLY. NOT FOR USE IN DIAGNOSTIC OR THERAPEUTIC PROCEDURES'.