

# Caspase-7 Antibody

Rabbit mAb

Catalog # AP90582

## Product Information

---

<b>Application</b>	WB, IHC, IP
<b>Primary Accession</b>	<a href="#">P97864(mouse)(human:P55210)</a>
<b>Reactivity</b>	Rat, Mouse
<b>Clonality</b>	Monoclonal
<b>Other Names</b>	CMH-1; ICE-LAP3; MCH3; CASP7; Caspase-7; Caspase7;
<b>Isotype</b>	Rabbit IgG
<b>Host</b>	Rabbit
<b>Calculated MW</b>	34 KDa

## Additional Information

---

<b>Dilution</b>	WB 1:500~1:1000 IHC 1:50~1:200 IP 1:50
<b>Purification</b>	Affinity-chromatography
<b>Immunogen</b>	A synthesized peptide derived from human Caspase-7
<b>Description</b>	Caspase-7 (CMH-1, Mch3, ICE-LAP3) has been identified as a major contributor to the execution of apoptosis. Caspase-7 is an effector caspase (along with caspase-2 and -3), meaning that it cleaves essential cellular machinery rather than activating other caspases. Caspase-7 is cleaved by many enzymes, including caspases-3, -6, -8, -9 and granzyme B. Once activated, caspase-7 cleaves many of the same substrates as caspase-3, including poly (ADP-ribose) polymerase, or PARP.
<b>Storage Condition and Buffer</b>	Rabbit IgG in phosphate buffered saline , pH 7.4, 150mM NaCl, 0.02% sodium azide and 50% glycerol. Store at +4°C short term. Store at -20°C long term. Avoid freeze / thaw cycle.

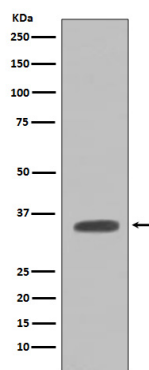
## Protein Information

---

## Images

---

Western blot analysis of Caspase-7 expression in NIH/3T3 cell lysate.



Please note: All products are 'FOR RESEARCH USE ONLY. NOT FOR USE IN DIAGNOSTIC OR THERAPEUTIC PROCEDURES'.