

UBE2I Antibody

Rabbit mAb

Catalog # AP90574

Product Information

Application	WB, IHC, IF, FC, ICC, IP, IHF
Primary Accession	P63279
Reactivity	Rat, Human, Mouse
Clonality	Monoclonal
Other Names	C358B7.1; P18; UBC9; UBE2I; SUMO1 protein ligase;
Isotype	Rabbit IgG
Host	Rabbit
Calculated MW	18007

Additional Information

Dilution	WB 1:500~1:2000 IHC 1:50~1:200 ICC/IF 1:50~1:200 IP 1:50
Purification	Affinity-chromatography
Immunogen	A synthesized peptide derived from human UBE2I
Description	The process of SUMO-1 conjugation is similar to that seen with ubiquitin and other forms of post-translational protein modification. Like ubiquitin, SUMO-1 is conjugated to its target protein by the coordinated action of ubiquitin conjugation enzymes E1, E2 and E3. Ubc9 (or ube2M) is a highly conserved, 158 amino acid protein that acts as a SUMO-1 conjugating enzyme. Ubc9 binds to target proteins through their SUMO-1-CS (consensus sequence) domains and interacts with SUMO via the structurally conserved amino-terminal domain.
Storage Condition and Buffer	Rabbit IgG in phosphate buffered saline , pH 7.4, 150mM NaCl, 0.02% sodium azide and 50% glycerol. Store at +4°C short term. Store at -20°C long term. Avoid freeze / thaw cycle.

Protein Information

Name	UBE2I
Synonyms	UBC9, UBCE9
Function	Accepts the ubiquitin-like proteins SUMO1, SUMO2, SUMO3, SUMO4 and SUMO1P1/SUMO5 from the UBLE1A-UBLE1B E1 complex and catalyzes their covalent attachment to other proteins with the help of an E3 ligase such as RANBP2, CBX4 and ZNF451. Can catalyze the formation of poly-SUMO chains. Necessary for sumoylation of FOXL2 and KAT5. Essential for nuclear architecture and chromosome segregation. Sumoylates p53/TP53 at 'Lys-386'. Mediates sumoylation of ERCC6 which is essential for its transcription-coupled nucleotide excision repair activity (PubMed: 26620705). Sumoylates SHMT1 at 'Lys-38' or 'Lys-39' leading to RAN-dependent nuclear

import of SHMT1 (PubMed:[17446168](#)). Also sumoylates TYMS and DHFR (PubMed:[18067453](#)).

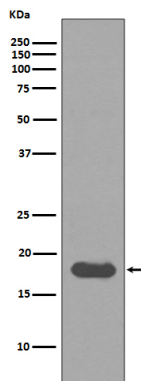
Cellular Location

Nucleus. Cytoplasm Cytoplasm, perinuclear region Note=Mainly nuclear (By similarity). In spermatocytes, localizes in synaptonemal complexes (PubMed:8610150). Recruited by BCL11A into the nuclear body (By similarity). {ECO:0000250|UniProtKB:P63280, ECO:0000269|PubMed:8610150}

Tissue Location

Expressed in heart, skeletal muscle, pancreas, kidney, liver, lung, placenta and brain. Also expressed in testis and thymus.

Images



Western blot analysis of UBE2I expression in HeLa cell lysate.

Image not found : 202311/AP90574-IHC.jpg

Immunohistochemical analysis of paraffin-embedded human kidney, using UBE2I Antibody.

Please note: All products are 'FOR RESEARCH USE ONLY. NOT FOR USE IN DIAGNOSTIC OR THERAPEUTIC PROCEDURES'.