

Cytokeratin 16 Antibody

Rabbit mAb

Catalog # AP90571

Product Information

Application	WB, IHC, IF, FC, ICC, IHF
Primary Accession	P08779
Reactivity	Human
Clonality	Monoclonal
Other Names	CK-16; CK16; cytokeratin 16; Cytokeratin-16; FNEPPK; K16; K1C16; K1CP; keratin 16; Keratin-16; KRT16; KRT16A; NEPPK;
Isotype	Rabbit IgG
Host	Rabbit
Calculated MW	51268

Additional Information

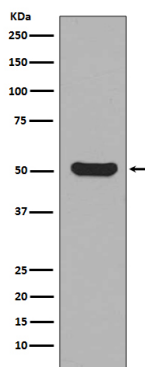
Dilution	WB 1:1000~1:2000 IHC 1:50~1:200 ICC/IF 1:50~1:200 FC 1:50
Purification	Affinity-chromatography
Immunogen	A synthesized peptide derived from human Cytokeratin 16
Description	K16 a type I cytoskeletal keratin. The keratins are intermediate filament proteins responsible for the structural integrity of epithelial cells and are subdivided into cytokeratins and hair keratins. There are two types of cytoskeletal and microfibrillar keratin: type I (acidic; 40-55 kDa) [K9 to K20] and type II (neutral to basic; 56-70 kDa) [K1 to K8].
Storage Condition and Buffer	Rabbit IgG in phosphate buffered saline , pH 7.4, 150mM NaCl, 0.02% sodium azide and 50% glycerol. Store at +4°C short term. Store at -20°C long term. Avoid freeze / thaw cycle.

Protein Information

Name	KRT16
Synonyms	KRT16A
Function	Epidermis-specific type I keratin that plays a key role in skin. Acts as a regulator of innate immunity in response to skin barrier breach: required for some inflammatory checkpoint for the skin barrier maintenance.
Tissue Location	Expressed in the corneal epithelium (at protein level).

Images

Western blot analysis of Cytokeratin 16 expression in



HaCat cell lysate.

Image not found : 202311/AP90571-IHC.jpg

Immunohistochemical analysis of paraffin-embedded human skin, using Cytokeratin 16 Antibody.

Please note: All products are 'FOR RESEARCH USE ONLY. NOT FOR USE IN DIAGNOSTIC OR THERAPEUTIC PROCEDURES'.