

EEA1 Antibody

Rabbit mAb

Catalog # AP90566

Product Information

Application	WB, IF, ICC
Primary Accession	Q15075
Reactivity	Rat, Human, Mouse
Clonality	Monoclonal
Other Names	Early endosome antigen 1; EEA1; MST105; ZFYVE2;
Isotype	Rabbit IgG
Host	Rabbit
Calculated MW	162466

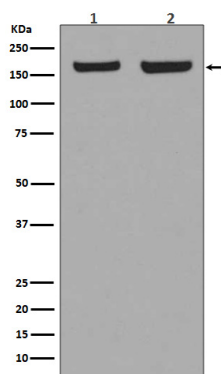
Additional Information

Dilution	WB 1:500~1:2000 ICC/IF 1:50~1:200
Purification	Affinity-chromatography
Immunogen	A synthesized peptide derived from human EEA1
Description	EEA1 is an early endosomal marker and a Rab5 effector protein essential for early endosomal membrane fusion and trafficking (1-2). The carboxy terminus of EEA1 contains a FYVE domain which binds to phosphatidylinositol-3-phosphate (PtdIns(3)P), targeting EEA1 to early endosomes (3). The stable association of EEA1 with the endosomal membrane is regulated by PI3 kinase, Rab5 and calcium/calmodulin (4-6). Once on the membrane, EEA1 interacts with Rab5, NSF and syntaxin 13 to promote early endosomal membrane docking and fusion (7).
Storage Condition and Buffer	Rabbit IgG in phosphate buffered saline , pH 7.4, 150mM NaCl, 0.02% sodium azide and 50% glycerol. Store at +4°C short term. Store at -20°C long term. Avoid freeze / thaw cycle.

Protein Information

Name	EEA1
Synonyms	ZFYVE2
Function	Binds phospholipid vesicles containing phosphatidylinositol 3-phosphate and participates in endosomal trafficking.
Cellular Location	Cytoplasm. Early endosome membrane; Peripheral membrane protein

Images



Western blot analysis of EEA1 expression in (1) HeLa cell lysate; (2) NIH/3T3 cell lysate.

Please note: All products are 'FOR RESEARCH USE ONLY. NOT FOR USE IN DIAGNOSTIC OR THERAPEUTIC PROCEDURES'.