

Akt(pan) 1/2/3 Antibody

Rabbit mAb

Catalog # AP90564

Product Information

Application	WB, IHC, IF, FC, ICC, IP, IHF
Primary Accession	P31749/P31751/Q9Y243
Reactivity	Rat, Human, Mouse
Clonality	Monoclonal
Other Names	PKB;RAC;PRKBA;PKB-ALPHA;RAC-ALPHA; AKT1 ; AKT2; AKT3; Akt1/2/3; pan Akt;
Isotype	Rabbit IgG
Host	Rabbit
Calculated MW	56 KDa

Additional Information

Dilution	WB 1:500~1:2000 IHC 1:50~1:200 ICC/IF 1:50~1:200 IP 1:50
Purification	Affinity-chromatography
Immunogen	A synthesized peptide derived from human AKT1/2/3
Description	Akt, also referred to as PKB or Rac, plays a critical role in controlling survival and apoptosis. This protein kinase is activated by insulin and various growth and survival factors to function in a wortmannin-sensitive pathway involving PI3 kinase. Akt is activated by phospholipid binding and activation loop phosphorylation at Thr308 by PDK1 and by phosphorylation within the carboxy terminus at Ser473.
Storage Condition and Buffer	Rabbit IgG in phosphate buffered saline , pH 7.4, 150mM NaCl, 0.02% sodium azide and 50% glycerol. Store at +4°C short term. Store at -20°C long term. Avoid freeze / thaw cycle.

Protein Information

Images

Western blot analysis of Akt(pan)1/2/3 expression in (1) A549 cell lysate; (2) Mouse brain lysate; (3) Rat brain lysate; (4) Rat heart lysate; (5) Rat kidney lysate.

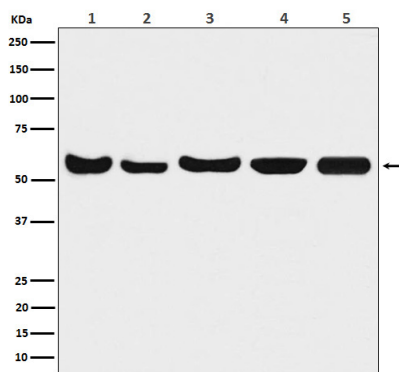


Image not found : 202311/AP90564-IHC.jpg

Immunohistochemical analysis of paraffin-embedded human testis, using Akt(pan)1/2/3 Antibody.

Image not found : 202311/AP90564-IF.jpg

Immunofluorescent analysis of MCF-7 cells, using Akt(pan)1/2/3 Antibody.

Image not found : 202311/AP90564-wb5.jpg

Prostaglandin E1 Inhibited Diabetes-Induced Phenotypic Switching of Vascular Smooth Muscle Cells Through Activating Autophagy. -Cellular Physiology and Biochemistry

Image not found : 202311/AP90564-wb6.jpg

Immunomodulatory activity of Ganoderma lucidum immunomodulatory protein via PI3K/Akt and MAPK signaling pathways in RAW264.7 cells. -JOURNAL OF CELLULAR PHYSIOLOGY

Please note: All products are 'FOR RESEARCH USE ONLY. NOT FOR USE IN DIAGNOSTIC OR THERAPEUTIC PROCEDURES'.