

# CCR3 Antibody

Rabbit mAb

Catalog # AP90562

## Product Information

<b>Application</b>	WB, IHC, IF, ICC, IHF
<b>Primary Accession</b>	<a href="#">P51677</a>
<b>Reactivity</b>	Rat, Human, Mouse
<b>Clonality</b>	Monoclonal
<b>Other Names</b>	CCR3; CD193; CCKR3; CMKBR3; CKR3; CMKBR1L2; C-C chemokine receptor type 3;
<b>Isotype</b>	Rabbit IgG
<b>Host</b>	Rabbit
<b>Calculated MW</b>	41044

## Additional Information

<b>Dilution</b>	WB 1:500~1:2000 IHC 1:50~1:200 ICC/IF 1:50~1:200
<b>Purification</b>	Affinity-chromatography
<b>Immunogen</b>	A synthesized peptide derived from human CCR3
<b>Description</b>	Receptor for a C-C type chemokine. Binds to eotaxin, eotaxin-3, MCP-3, MCP-4, RANTES and MIP-1 delta. Subsequently transduces a signal by increasing the intracellular calcium ions level. Alternative coreceptor with CD4 for HIV-1 infection.
<b>Storage Condition and Buffer</b>	Rabbit IgG in phosphate buffered saline , pH 7.4, 150mM NaCl, 0.02% sodium azide and 50% glycerol. Store at +4°C short term. Store at -20°C long term. Avoid freeze / thaw cycle.

## Protein Information

<b>Name</b>	CCR3
<b>Synonyms</b>	CMKBR3
<b>Function</b>	G protein-coupled receptor (GPCR) that plays a key role in the immune system by regulating the migration and activation of white blood cells in response to chemokines (PubMed: <a href="#">28994588</a> ). Selectively interacts with eosinophil-attracting chemokines such as eotaxin/CCL11, eotaxin-2/CCL24 and eotaxin-3/CCL26 (PubMed: <a href="#">7622448</a> , PubMed: <a href="#">8642344</a> , PubMed: <a href="#">8676064</a> ). Ligand binding triggers intracellular signaling that leads to chemotaxis of immune cells. Mechanistically, signals through GNA14 or GNA16 to induce stimulation of phospholipase Cbeta/PLCB2 and subsequently chemotaxis (PubMed: <a href="#">18406577</a> ). Alternatively, transduces signal via GNAI1 resulting in elevated intracellular calcium levels and activation of the PI3K/AKT pathway (PubMed: <a href="#">8676064</a> , PubMed: <a href="#">35570218</a> ). May also act as a possible functional receptor for NARS1 (PubMed: <a href="#">30171954</a> ).

**Cellular Location**

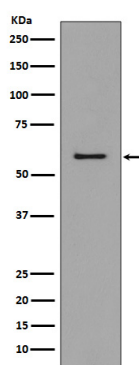
Cell membrane; Multi-pass membrane protein

**Tissue Location**

In eosinophils as well as trace amounts in neutrophils and monocytes.

## Images

---



Western blot analysis of CCR3 expression in K562 cell lysate.

Image not found : 202311/AP90562-IHC.jpg

Immunohistochemical analysis of paraffin-embedded human epidermal cells of skin, using CCR3 Antibody .

Please note: All products are 'FOR RESEARCH USE ONLY. NOT FOR USE IN DIAGNOSTIC OR THERAPEUTIC PROCEDURES'.