

FLI1 Antibody

Rabbit mAb

Catalog # AP90560

Product Information

Application	WB, IHC
Primary Accession	Q01543
Reactivity	Human, Mouse
Clonality	Monoclonal
Other Names	EWSR2; FLI1; Friend leukemia integration 1 transcription factor; Friend leukemia virus integration 1; Proto-oncogene Fli-1; SIC-1; Transcription factor ERGB;
Isotype	Rabbit IgG
Host	Rabbit
Calculated MW	50982

Additional Information

Dilution	WB 1:500~1:2000 IHC 1:100~1:500
Purification	Affinity-chromatography
Immunogen	A synthesized peptide derived from human FLI1
Description	FLI1 Sequence-specific transcriptional activator. Recognizes the DNA sequence 5'-C[CA]GGAAGT-3'. Belongs to the ETS family. Can form homodimers or heterodimers with ETV6/TEL1. 2 isoforms of the human protein are produced by alternative splicing.
Storage Condition and Buffer	Rabbit IgG in phosphate buffered saline , pH 7.4, 150mM NaCl, 0.02% sodium azide and 50% glycerol. Store at +4°C short term. Store at -20°C long term. Avoid freeze / thaw cycle.

Protein Information

Name	FLI1
Function	Sequence-specific transcriptional activator (PubMed: 24100448 , PubMed: 26316623 , PubMed: 28255014). Recognizes the DNA sequence 5'-C[CA]GGAAGT-3'.
Cellular Location	Nucleus.

Images

Western blot analysis of FLI1 expression in Jurkat cell lysate.

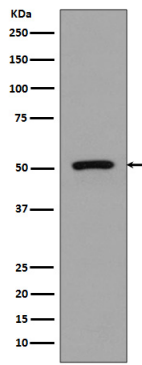


Image not found : 202311/AP90560-IHC.jpg

Immunohistochemical analysis of paraffin-embedded human tonsil, using FLI1 Antibody .

Please note: All products are 'FOR RESEARCH USE ONLY. NOT FOR USE IN DIAGNOSTIC OR THERAPEUTIC PROCEDURES'.