

# KRAS+HRAS+NRAS Antibody

Rabbit mAb

Catalog # AP90552

## Product Information

---

<b>Application</b>	WB, IF, FC, ICC, IP
<b>Primary Accession</b>	<a href="#">P01111/P01112/P01116</a>
<b>Reactivity</b>	Rat, Human, Mouse
<b>Clonality</b>	Monoclonal
<b>Other Names</b>	GTPase NRas; Transforming protein N-Ras; NRAS; HRAS1; GTPase HRas; H-Ras-1; Ha-Ras; Transforming protein p21; c-H-ras; p21ras; HRAS; HRAS1; GTPase KRas; K-Ras 2; Ki-Ras; c-K-ras; c-Ki-ras; KRAS; KRAS2; RASK2;
<b>Isotype</b>	Rabbit IgG
<b>Host</b>	Rabbit
<b>Calculated MW</b>	21 KDa

## Additional Information

---

<b>Dilution</b>	WB 1:500~1:2000 ICC/IF 1:50~1:200 IP 1:50 FC 1:200
<b>Purification</b>	Affinity-chromatography
<b>Immunogen</b>	A synthesized peptide derived from human KRAS+HRAS+NRAS
<b>Description</b>	HRas a small GTPase protein of the Ras family. Alternates between an inactive form bound to GDP and an active form bound to GTP. Activated by a guanine nucleotide-exchange factor (GEF) and inactivated by a GTPase-activating protein (GAP). Mutations are implicated in a variety of human tumors.
<b>Storage Condition and Buffer</b>	Rabbit IgG in phosphate buffered saline , pH 7.4, 150mM NaCl, 0.02% sodium azide and 50% glycerol. Store at +4°C short term. Store at -20°C long term. Avoid freeze / thaw cycle.

## Protein Information

---

## Images

---

Western blot analysis of KRAS+HRAS+NRAS expression in  
(1) 293T cell lysate; (2) C6 cell lysate.

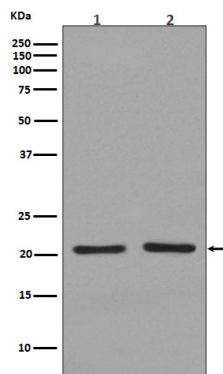


Image not found : 202311/AP90552-IF.jpg

Immunofluorescent analysis of Hela cells, using KRAS+HRAS+NRAS Antibody.

Image not found : 202311/AP90552-wb6.jpg

CircDLST promotes the tumorigenesis and metastasis of gastric cancer by sponging miR-502-5p and activating the NRAS/MEK1/ERK1/2 signaling. -Molecular Cancer

Please note: All products are 'FOR RESEARCH USE ONLY. NOT FOR USE IN DIAGNOSTIC OR THERAPEUTIC PROCEDURES'.