

Hsp90 Antibody

Rabbit mAb

Catalog # AP90551

Product Information

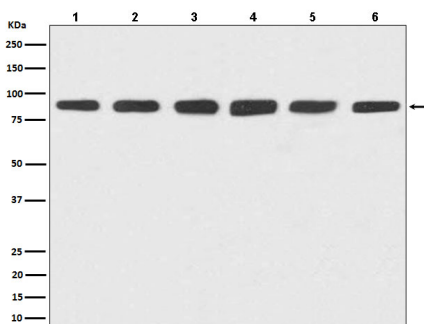
Application	WB, IHC, IF, FC, ICC, IP, IHF
Primary Accession	P07900/P08238
Reactivity	Rat, Human, Mouse
Clonality	Monoclonal
Other Names	HSP 90; HSP90A; HSP90B; LAP-2; HSPC1; HSPC2;
Isotype	Rabbit IgG
Host	Rabbit
Calculated MW	90 KDa

Additional Information

Dilution	WB 1:5000~1:10000 IHC 1:50~1:200 ICC/IF 1:50~1:200 IP 1:50 FC 1:100
Purification	Affinity-chromatography
Immunogen	A synthesized peptide derived from human Hsp90
Description	Molecular chaperone that promotes the maturation, structural maintenance and proper regulation of specific target proteins involved for instance in cell cycle control and signal transduction. Undergoes a functional cycle that is linked to its ATPase activity. This cycle probably induces conformational changes in the client proteins, thereby causing their activation.
Storage Condition and Buffer	Rabbit IgG in phosphate buffered saline , pH 7.4, 150mM NaCl, 0.02% sodium azide and 50% glycerol. Store at +4°C short term. Store at -20°C long term. Avoid freeze / thaw cycle.

Protein Information

Images



Western blot analysis of Hsp90 expression in (1) HeLa cell lysate; (2) Jurkat cell lysate; (3) RAW264.7 cell lysate; (4) NIH/3T3 cell lysate; (5) PC-12 cell lysate; (6) C6 cell lysate.

Image not found : 202311/AP90551-IHC.jpg

Immunohistochemical analysis of paraffin-embedded human liver carcinoma, using Hsp90 Antibody .

Image not found : 202311/AP90551-IF.jpg

Immunofluorescent analysis of Hela cells, using Hsp90 Antibody.

Please note: All products are 'FOR RESEARCH USE ONLY. NOT FOR USE IN DIAGNOSTIC OR THERAPEUTIC PROCEDURES'.