

Phospho-JNK1/2/3 (T183+T183+T221) Antibody

Rabbit mAb

Catalog # AP90544

Product Information

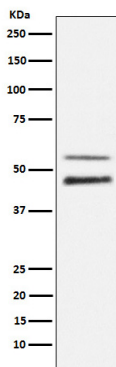
Application	WB, IHC, IF, FC, ICC, IP, IHF
Primary Accession	P45983/P45984/P53779
Reactivity	Rat, Human, Mouse
Clonality	Monoclonal
Other Names	JNK 46; JNK 55; MAPK10; MAPK9; MAPK8; SAPK1b ; SAPK1; SAPK; PRKM10; PRKM9; PRKM8;
Isotype	Rabbit IgG
Host	Rabbit
Calculated MW	46 KDa

Additional Information

Dilution	WB 1:500~1:2000 IHC 1:50~1:200 ICC/IF 1:50~1:200 IP 1:50
Purification	Affinity-chromatography
Immunogen	A synthesized peptide derived from human Phospho-JNK1/2/3 (T183+T183+T221)
Description	Phospho-JNK1/2/3 (T183+T183+T221) Antibody will detect will detect JNK1 (pT183), JNK2 (pT183) and JNK3 (pT221).
Storage Condition and Buffer	Rabbit IgG in phosphate buffered saline , pH 7.4, 150mM NaCl, 0.02% sodium azide and 50% glycerol. Store at +4°C short term. Store at -20°C long term. Avoid freeze / thaw cycle.

Protein Information

Images



Western blot analysis of JNK1/2/3 phosphorylation expression in NIH/3T3 cell lysate treated with Anisomycin.

Image not found : 202311/AP90544-wb2.jpg	Western blot analysis of JNK1/2/3 phosphorylation expression in HeLa cells treated with 20J/m2 UV-C.
Image not found : 202311/AP90544-IHC.jpg	Immunohistochemical analysis of paraffin-embedded human breast, using Phospho-JNK1/2/3 (T183+T183+T221) Antibody.
Image not found : 202311/AP90544-IF.jpg	Immunofluorescent analysis of NIH/3T3 cells treated with Anisomycin, using Phospho-JNK1/2/3 (T183+T183+T221) Antibody.
Image not found : 202311/AP90544-wb5.jpg	ZCCHC9 promotes proliferation and invasion of lung cancer through regulating the JNK pathway. -JOURNAL OF CELLULAR BIOCHEMISTRY
Image not found : 202311/AP90544-wb6.jpg	CD274 promotes cell cycle entry of leukemia-initiating cells through JNK/Cyclin D2 signaling. -Journal of Hematology & Oncology

Please note: All products are 'FOR RESEARCH USE ONLY. NOT FOR USE IN DIAGNOSTIC OR THERAPEUTIC PROCEDURES'.