

GATA2/3 Antibody

Rabbit mAb

Catalog # AP90506

Product Information

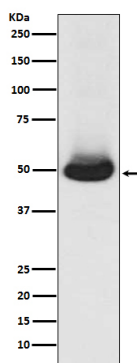
Application	WB, IHC, IF, ICC, IP, IHF
Primary Accession	P23769/P23771
Reactivity	Rat, Human, Mouse
Clonality	Monoclonal
Other Names	DCML;GATA binding protein 2;GATA binding protein 3;HDR;HDRS;IMD21;MONOMAC;NFE1B
Isotype	Rabbit IgG
Host	Rabbit
Calculated MW	51 KDa

Additional Information

Dilution	WB 1:500~1:2000 IHC 1:50~1:200 ICC/IF 1:50~1:200 IP 1:50
Purification	Affinity-chromatography
Immunogen	A synthesized peptide derived from human GATA2/3
Description	Transcriptional activator which regulates endothelin-1 gene expression in endothelial cells. Binds to the consensus sequence 5'-AGATAG-3'.
Storage Condition and Buffer	Rabbit IgG in phosphate buffered saline , pH 7.4, 150mM NaCl, 0.02% sodium azide and 50% glycerol. Store at +4°C short term. Store at -20°C long term. Avoid freeze / thaw cycle.

Protein Information

Images



Western blot analysis of GATA2/3 expression in K562 cell lysate.

Image not found : 202311/AP90506-IHC.jpg

Immunohistochemical analysis of paraffin-embedded mouse kidney, using GATA2/3 Antibody.

Image not found : 202311/AP90506-IF.jpg

Immunofluorescent analysis of K562 cells, using GATA2/3 Antibody .

Please note: All products are 'FOR RESEARCH USE ONLY. NOT FOR USE IN DIAGNOSTIC OR THERAPEUTIC PROCEDURES'.