

MLKL Antibody

Rabbit mAb

Catalog # AP90496

Product Information

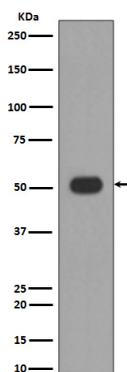
Application	WB, IHC
Primary Accession	Q8NB16
Reactivity	Human
Clonality	Monoclonal
Other Names	Mixed lineage kinase domain-like protein; hMLKL;
Isotype	Rabbit IgG
Host	Rabbit
Calculated MW	54 KDa

Additional Information

Dilution	WB 1:500~1:2000 IHC 50~200
Purification	Affinity-chromatography
Immunogen	A synthesized peptide derived from human MLKL
Description	Pseudokinase that plays a key role in TNF-induced necroptosis, a programmed cell death process. Activated following phosphorylation by RIPK3, leading to homotrimerization, localization to the plasma membrane and execution of programmed necrosis characterized by calcium influx and plasma membrane damage. Does not have protein kinase activity.
Storage Condition and Buffer	Rabbit IgG in phosphate buffered saline , pH 7.4, 150mM NaCl, 0.02% sodium azide and 50% glycerol. Store at +4°C short term. Store at -20°C long term. Avoid freeze / thaw cycle.

Protein Information

Images



Western blot analysis of MLKL expression in HUVEC cell lysate.

Image not found : 202311/AP90496-IHC.jpg

Immunohistochemical analysis of paraffin-embedded human colon, using MLKL Antibody.

Image not found : 202311/AP90496-wb6.jpg

Targeting CAND1 promotes caspase-8/RIP1-dependent apoptosis in liver cancer cells. -Am J Transl Res(AMERICAN JOURNAL OF TRANSLATIONAL RESEARCH)

Please note: All products are 'FOR RESEARCH USE ONLY. NOT FOR USE IN DIAGNOSTIC OR THERAPEUTIC PROCEDURES'.