

# JNK1/2/3 Antibody

Rabbit mAb

Catalog # AP90493

## Product Information

---

<b>Application</b>	WB, IF, ICC, IP
<b>Primary Accession</b>	<a href="#">P45983/P45984/P53779</a>
<b>Reactivity</b>	Rat, Human, Mouse, Zebrafish, Monkey, Bovine, Dog
<b>Clonality</b>	Monoclonal
<b>Other Names</b>	c-Jun N-terminal kinase 3; JNK1; JNK2;JNK3; JNK3 alpha protein kinase; JNK3A; MAP kinase 10; MAP kinase p49 3F12; MAPK 10; MAPK10;
<b>Isotype</b>	Rabbit IgG
<b>Host</b>	Rabbit
<b>Calculated MW</b>	46 KDa

## Additional Information

---

<b>Dilution</b>	WB 1:1000~1:2000 ICC/IF 1:50~1:200 IP 1:50
<b>Purification</b>	Affinity-chromatography
<b>Immunogen</b>	A synthesized peptide derived from human JNK1+JNK2+JNK3
<b>Description</b>	Serine/threonine-protein kinase involved in various processes such as cell proliferation, differentiation, migration, transformation and programmed cell death. Extracellular stimuli such as proinflammatory cytokines or physical stress stimulate the stress-activated protein kinase/c-Jun N-terminal kinase (SAP/JNK) signaling pathway.
<b>Storage Condition and Buffer</b>	Rabbit IgG in phosphate buffered saline , pH 7.4, 150mM NaCl, 0.02% sodium azide and 50% glycerol. Store at +4°C short term. Store at -20°C long term. Avoid freeze / thaw cycle.

## Protein Information

---

## Images

---

Western blot analysis of JNK1/2/3 Antibody expression in HeLa cell lysate.

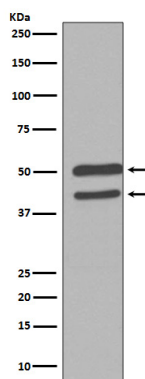


Image not found : 202311/AP90493-IF.jpg

Immunofluorescent analysis of Hela cells, using JNK1/2/3 Antibody.

Image not found : 202311/AP90493-wb6.jpg

CD274 promotes cell cycle entry of leukemia-initiating cells through JNK/Cyclin D2 signaling. -Journal of Hematology & Oncology

Please note: All products are 'FOR RESEARCH USE ONLY. NOT FOR USE IN DIAGNOSTIC OR THERAPEUTIC PROCEDURES'.