

Phospho-Cdk1/2 (T14) Antibody

Rabbit mAb

Catalog # AP90492

Product Information

Application	WB, IHC, IP
Primary Accession	P06493/P24941
Reactivity	Rat, Human, Mouse
Clonality	Monoclonal
Other Names	CDC28; CDC2A; CDK1; Cell division control protein 2 homolog; Cyclin-dependent kinase 1; MPF; kinase Cdc2; p34 protein kinase;
Isotype	Rabbit IgG
Host	Rabbit
Calculated MW	34 KDa

Additional Information

Dilution	WB 1:500~1:2000 IHC 1:50~1:200 IP 1:50
Purification	Affinity-chromatography
Immunogen	A synthesized peptide derived from human Phospho-Cdk1/2 (T14)
Description	Cdk2 is a member of the Ser/Thr protein kinase family. It is highly similar to the gene products of <i>S. cerevisiae</i> cdc28, and <i>S. pombe</i> cdc2. Cdk2 is closely related to cdc2 (cdk1) which has proved useful as a marker of proliferation. Cdk1 and Cdk2 are a catalytic subunits of the highly conserved protein kinase complex known as M-phase promoting factor (MPF), which is essential for G1/S and G2/M phase transitions of eukaryotic cell cycle.
Storage Condition and Buffer	Rabbit IgG in phosphate buffered saline , pH 7.4, 150mM NaCl, 0.02% sodium azide and 50% glycerol. Store at +4°C short term. Store at -20°C long term. Avoid freeze / thaw cycle.

Protein Information

Images

Western blot analysis of Phospho-Cdk1/2 (T14) expression in HeLa cell lysate treated with hydroxyurea.

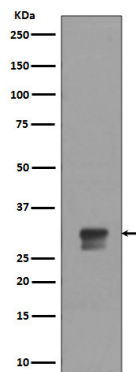


Image not found : 202311/AP90492-IHC.jpg

Immunohistochemical analysis of paraffin-embedded rat spleen, using Phospho-Cdk1/2 (T14) Antibody.

Please note: All products are 'FOR RESEARCH USE ONLY. NOT FOR USE IN DIAGNOSTIC OR THERAPEUTIC PROCEDURES'.