

Histone H2A Antibody

Rabbit mAb

Catalog # AP90484

Product Information

Application	WB, IHC, IF, ICC, IHF
Primary Accession	P04908/P0C0S8/P20671/Q16777/Q6FI13/Q7L7L0/Q8IUE6/Q93077/Q96KK5/Q96QV6/Q99878
Reactivity	Rat, Human, Mouse
Clonality	Monoclonal
Other Names	H2A.1; H2A.2; H2A/a; H2A/m; H2A/q; H2A1B; H2AFA; H2AFE; H2AFL; H2AFM; H2AFO; H2AFQ; HIST1H2AE; HIST1H2AJ; HIST2H2AA; HIST2H2AA3; HIST2H2AB; HIST2H2AC;
Isotype	Rabbit IgG
Host	Rabbit
Calculated MW	14 KDa

Additional Information

Dilution	WB 1:1000~1:5000 IHC 1:50~1:200 ICC/IF 1:50~1:200
Purification	Affinity-chromatography
Immunogen	A synthesized peptide derived from human Histone H2A
Description	Core component of nucleosome. Nucleosomes wrap and compact DNA into chromatin, limiting DNA accessibility to the cellular machineries which require DNA as a template. Histones thereby play a central role in transcription regulation, DNA repair, DNA replication and chromosomal stability. DNA accessibility is regulated via a complex set of post-translational modifications of histones, also called histone code, and nucleosome remodeling.
Storage Condition and Buffer	Rabbit IgG in phosphate buffered saline , pH 7.4, 150mM NaCl, 0.02% sodium azide and 50% glycerol. Store at +4°C short term. Store at -20°C long term. Avoid freeze / thaw cycle.

Protein Information

Images

Western blot analysis of Histone H2A expression in HeLa cell lysate.

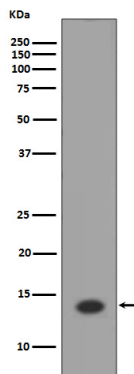


Image not found : 202311/AP90484-IHC.jpg

Immunohistochemical analysis of paraffin-embedded human colon, using Histone H2A Antibody.

Image not found : 202311/AP90484-IF.jpg

Immunofluorescent analysis of Hela cells, using Histone H2A Antibody.

Please note: All products are 'FOR RESEARCH USE ONLY. NOT FOR USE IN DIAGNOSTIC OR THERAPEUTIC PROCEDURES'.