

# Histone H2B (yeast) Antibody

Rabbit mAb

Catalog # AP90481

## Product Information

---

<b>Application</b>	WB
<b>Primary Accession</b>	<a href="#">P02293(yeast)</a>
<b>Reactivity</b>	Yeast
<b>Clonality</b>	Monoclonal
<b>Other Names</b>	HTB2; Htb2p; HTB1; Htb1p; Histone H2B.1; Histone H2B.2; SPT12;
<b>Isotype</b>	Rabbit IgG
<b>Host</b>	Rabbit
<b>Calculated MW</b>	14 KDa

## Additional Information

---

<b>Dilution</b>	WB 1:500~1:2000
<b>Purification</b>	Affinity-chromatography
<b>Immunogen</b>	A synthesized peptide derived from yeast Histone H2B (yeast)
<b>Description</b>	Core component of nucleosome. Nucleosomes wrap and compact DNA into chromatin, limiting DNA accessibility to the cellular machineries which require DNA as a template. Histones thereby play a central role in transcription regulation, DNA repair, DNA replication and chromosomal stability. DNA accessibility is regulated via a complex set of post-translational modifications of histones, also called histone code, and nucleosome remodeling.
<b>Storage Condition and Buffer</b>	Rabbit IgG in phosphate buffered saline , pH 7.4, 150mM NaCl, 0.02% sodium azide and 50% glycerol. Store at +4°C short term. Store at -20°C long term. Avoid freeze / thaw cycle.

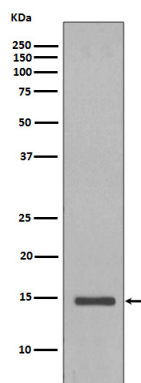
## Protein Information

---

## Images

---

Western blot analysis of Histone H2B expression in *Saccharomyces cerevisiae* cell lysate.



Please note: All products are 'FOR RESEARCH USE ONLY. NOT FOR USE IN DIAGNOSTIC OR THERAPEUTIC PROCEDURES'.