

beta II Tubulin Antibody

Rabbit mAb

Catalog # AP90428

Product Information

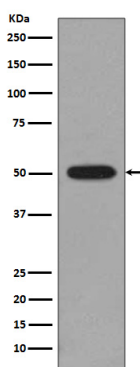
Application	WB, IHC, IF, FC, ICC, IP, IHF
Primary Accession	P68371/Q13885/Q9BVA1
Reactivity	Rat, Human, Mouse
Clonality	Monoclonal
Other Names	class II beta tubulin isotype; Beta2; Tubulin beta 2 chain; TUBB; TUBB2;
Isotype	Rabbit IgG
Host	Rabbit
Calculated MW	50 KDa

Additional Information

Dilution	WB 1:1000~1:2000 IHC 1:50~1:200 ICC/IF 1:50~1:200 IP 1:50
Purification	Affinity-chromatography
Immunogen	A synthesized peptide derived from human beta II Tubulin
Description	Tubulin is the major constituent of microtubules. It binds two moles of GTP, one at an exchangeable site on the beta chain and one at a non-exchangeable site on the alpha chain.
Storage Condition and Buffer	Rabbit IgG in phosphate buffered saline , pH 7.4, 150mM NaCl, 0.02% sodium azide and 50% glycerol. Store at +4°C short term. Store at -20°C long term. Avoid freeze / thaw cycle.

Protein Information

Images



Western blot analysis of beta II Tubulin expression in C6 cell lysate.

Image not found : 202311/AP90428-IHC.jpg

Immunohistochemical analysis of paraffin-embedded mouse brain, using beta II Tubulin Antibody.

Please note: All products are 'FOR RESEARCH USE ONLY. NOT FOR USE IN DIAGNOSTIC OR THERAPEUTIC PROCEDURES'.