

ICAM1 Antibody

Rabbit mAb
Catalog # AP90426

Product Information

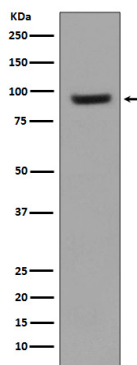
Application	WB, IHC, IF, FC, ICC, IHF
Primary Accession	P05362
Reactivity	Human
Clonality	Monoclonal
Other Names	BB2; CD54; P3.58; MyD10; ICAM1;
Isotype	Rabbit IgG
Host	Rabbit
Calculated MW	89 KDa

Additional Information

Dilution	WB 1:500~1:2000 IHC 1:50~1:200 ICC/IF 1:50~1:200 FC 1:50
Purification	Affinity-chromatography
Immunogen	A synthesized peptide derived from human ICAM1
Description	ICAM1 a type I membrane protein of the immunoglobulin superfamily. Is a ligand for the leukocyte adhesion LFA-1 protein (Integrin alpha-L/beta-2) and a Rhinovirus receptor. Typically expressed on endothelial cells and cells of the immune system.
Storage Condition and Buffer	Rabbit IgG in phosphate buffered saline , pH 7.4, 150mM NaCl, 0.02% sodium azide and 50% glycerol. Store at +4°C short term. Store at -20°C long term. Avoid freeze / thaw cycle.

Protein Information

Images



Western blot analysis of ICAM1 expression in Raji cell lysate.

Please note: All products are 'FOR RESEARCH USE ONLY. NOT FOR USE IN DIAGNOSTIC OR THERAPEUTIC PROCEDURES'.