

# Maltose Binding Protein Antibody

Rabbit mAb

Catalog # AP90421

## Product Information

<b>Application</b>	WB
<b>Primary Accession</b>	<a href="#">P0AEX9</a>
<b>Reactivity</b>	E. coli
<b>Clonality</b>	Monoclonal
<b>Other Names</b>	MMBP; MalE; Maltose Binding Protein; Maltose binding periplasmic protein;
<b>Isotype</b>	Rabbit IgG
<b>Host</b>	Rabbit
<b>Calculated MW</b>	43388

## Additional Information

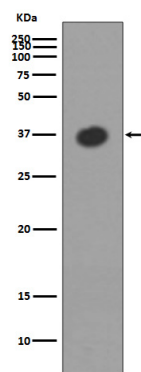
<b>Dilution</b>	WB 1:1000~1:2000
<b>Purification</b>	Affinity-chromatography
<b>Immunogen</b>	A synthesized peptide derived from human Maltose Binding Protein
<b>Description</b>	Epitope tagging offers an easy and universal strategy for the identification and purification of proteins derived by recombinant DNA technology. The insertion of a Maltose Binding Protein (MBP) tag creates a stable fusion product that does not interfere with the bioactivity of the protein or with the biodistribution of the MBP tagged product. Cleavage by factor Xa separates MBP from its partner protein.
<b>Storage Condition and Buffer</b>	Rabbit IgG in phosphate buffered saline , pH 7.4, 150mM NaCl, 0.02% sodium azide and 50% glycerol. Store at +4°C short term. Store at -20°C long term. Avoid freeze / thaw cycle.

## Protein Information

<b>Name</b>	malE {ECO:0000303   PubMed:4215651}
<b>Function</b>	Part of the ABC transporter complex MalEFGK involved in maltose/maltodextrin import. Binds maltose and higher maltodextrins such as maltotriose.
<b>Cellular Location</b>	Periplasm.

## Images

Western blot analysis of MBP expression in Escherichia coli lysate.



Please note: All products are 'FOR RESEARCH USE ONLY. NOT FOR USE IN DIAGNOSTIC OR THERAPEUTIC PROCEDURES'.