

Cytokeratin 8 Antibody

Rabbit mAb

Catalog # AP90419

Product Information

Application	WB, IHC, IF, FC, ICC, IP, IHF
Primary Accession	P05787
Reactivity	Human, Mouse
Clonality	Monoclonal
Other Names	CARD2; CK-8; CK8; CYK8; cytokeratin 8; Cytokeratin-8; K2C8; K8; keratin 8; Keratin, type II cytoskeletal 8; Keratin-8; KO; KRT8; Type-II keratin Kb8;
Isotype	Rabbit IgG
Host	Rabbit
Calculated MW	53704

Additional Information

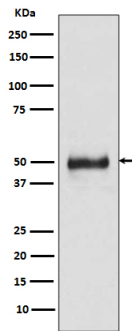
Dilution	WB 1:10000~1:20000 IHC 1:50~1:200 ICC/IF 1:50~1:200 IP 1:50 FC 1:50
Purification	Affinity-chromatography
Immunogen	A synthesized peptide derived from human Cytokeratin 8
Description	Together with KRT19, helps to link the contractile apparatus to dystrophin at the costameres of striated muscle. K8 a type II cytoskeletal keratin. The keratins are intermediate filament proteins responsible for the structural integrity of epithelial cells and are subdivided into cytokeratins and hair keratins.
Storage Condition and Buffer	Rabbit IgG in phosphate buffered saline , pH 7.4, 150mM NaCl, 0.02% sodium azide and 50% glycerol. Store at +4°C short term. Store at -20°C long term. Avoid freeze / thaw cycle.

Protein Information

Name	KRT8
Synonyms	CYK8
Function	Required for the formation of KRT8/KRT18 filaments that are involved in ARHGEF40-mediated actin stress fiber formation and tensional force-induced stress fiber formation and reinforcement (PubMed: 26823019). Together with KRT19, helps to link the contractile apparatus to dystrophin at the costameres of striated muscle.
Cellular Location	Cytoplasm. Nucleus, nucleoplasm {ECO:0000250 UniProtKB:Q10758}. Nucleus matrix {ECO:0000250 UniProtKB:Q10758}. Cytoplasm, cytoskeleton
Tissue Location	Observed in muscle fibers accumulating in the costameres of myoplasm at the sarcolemma membrane in structures that contain dystrophin and

spectrin. Expressed in gingival mucosa and hard palate of the oral cavity.

Images



Western blot analysis of Cytokeratin 8 expression in HaCaT cell lysate.

Image not found : 202311/AP90419-IHC.jpg

Immunohistochemical analysis of paraffin-embedded human liver, using Cytokeratin 8 Antibody.

Please note: All products are 'FOR RESEARCH USE ONLY. NOT FOR USE IN DIAGNOSTIC OR THERAPEUTIC PROCEDURES'.