

EpCAM Antibody

Rabbit mAb

Catalog # AP90414

Product Information

Application	WB
Primary Accession	P16422
Reactivity	Rat, Human, Mouse
Clonality	Monoclonal
Other Names	ESA; KSA; M4S1; MK1; DIAR5; EGP2;EGP40; KS1/4; MIC18; TROP1; TACSTD1; EPCAM;
Isotype	Rabbit IgG
Host	Rabbit
Calculated MW	34932

Additional Information

Dilution	WB 1:1000~1:2000
Purification	Affinity-chromatography
Immunogen	A synthesized peptide derived from human EpCAM
Description	May act as a physical homophilic interaction molecule between intestinal epithelial cells (IECs) and intraepithelial lymphocytes (IELs) at the mucosal epithelium for providing immunological barrier as a first line of defense against mucosal infection. Plays a role in embryonic stem cells proliferation and differentiation. Up-regulates the expression of FABP5, MYC and cyclins A and E.
Storage Condition and Buffer	Rabbit IgG in phosphate buffered saline , pH 7.4, 150mM NaCl, 0.02% sodium azide and 50% glycerol. Store at +4°C short term. Store at -20°C long term. Avoid freeze / thaw cycle.

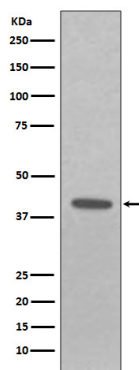
Protein Information

Name	EPCAM
Synonyms	GA733-2, M1S2, M4S1, MIC18, TACSTD1, TRO
Function	May act as a physical homophilic interaction molecule between intestinal epithelial cells (IECs) and intraepithelial lymphocytes (IELs) at the mucosal epithelium for providing immunological barrier as a first line of defense against mucosal infection. Plays a role in embryonic stem cells proliferation and differentiation. Up-regulates the expression of FABP5, MYC and cyclins A and E.
Cellular Location	Lateral cell membrane; Single-pass type I membrane protein. Cell junction, tight junction. Note=Colocalizes with CLDN7 at the lateral cell membrane and tight junction

Tissue Location

Highly and selectively expressed by undifferentiated rather than differentiated embryonic stem cells (ESC) Levels rapidly diminish as soon as ESC's differentiate (at protein levels). Expressed in almost all epithelial cell membranes but not on mesodermal or neural cell membranes. Found on the surface of adenocarcinoma.

Images



Western blot analysis of EpCAM expression in A431 cell lysate.

Please note: All products are 'FOR RESEARCH USE ONLY. NOT FOR USE IN DIAGNOSTIC OR THERAPEUTIC PROCEDURES'.