

# ELK1 Antibody

Rabbit mAb

Catalog # AP90409

## Product Information

---

<b>Application</b>	WB, IHC, IF, ICC, IP, IHF
<b>Primary Accession</b>	<a href="#">P19419</a>
<b>Reactivity</b>	Rat, Human, Mouse
<b>Clonality</b>	Monoclonal
<b>Other Names</b>	ELK1; ETS-domain protein ELK-1; ETS-domain protein Elk-1;
<b>Isotype</b>	Rabbit IgG
<b>Host</b>	Rabbit
<b>Calculated MW</b>	44888

## Additional Information

---

<b>Dilution</b>	WB 1:500~1:1000 IHC 1:50~1:200 ICC/IF 1:50~1:200 IP 1:30
<b>Purification</b>	Affinity-chromatography
<b>Immunogen</b>	A synthesized peptide derived from human ELK1
<b>Description</b>	This gene is a member of the Ets family of transcription factors and of the ternary complex factor (TCF) subfamily. Proteins of the TCF subfamily form a ternary complex by binding to the the serum response factor and the serum reponse element in the promoter of the c-fos proto-oncogene. The protein encoded by this gene is a nuclear target for the ras-raf-MAPK signaling cascade.
<b>Storage Condition and Buffer</b>	Rabbit IgG in phosphate buffered saline , pH 7.4, 150mM NaCl, 0.02% sodium azide and 50% glycerol. Store at +4°C short term. Store at -20°C long term. Avoid freeze / thaw cycle.

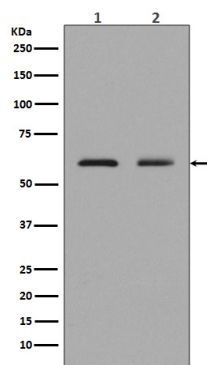
## Protein Information

---

<b>Name</b>	ELK1 ( <a href="#">HGNC:3321</a> )
<b>Function</b>	Transcription factor that binds to purine-rich DNA sequences (PubMed: <a href="#">10799319</a> , PubMed: <a href="#">7889942</a> ). Forms a ternary complex with SRF and the ETS and SRF motifs of the serum response element (SRE) on the promoter region of immediate early genes such as FOS and IER2 (PubMed: <a href="#">1630903</a> ). Induces target gene transcription upon JNK and MAPK-signaling pathways stimulation (PubMed: <a href="#">7889942</a> ).
<b>Cellular Location</b>	Nucleus.
<b>Tissue Location</b>	Lung and testis.

## Images

---



Western blot analysis of Elk1 expression in (1)Neuro-2a cell lysates; (2)K562 cell lysate.

Please note: All products are 'FOR RESEARCH USE ONLY. NOT FOR USE IN DIAGNOSTIC OR THERAPEUTIC PROCEDURES'.