

SCARB1 Antibody

Rabbit mAb

Catalog # AP90397

Product Information

Application	WB, IHC, IF, FC, ICC, IHF
Primary Accession	Q8WTV0
Reactivity	Rat, Human, Mouse
Clonality	Monoclonal
Other Names	CD36L1; CLA-1; CLA1; MGC138242; SR-BI; SRB1; Scavenging Receptor SR-BI; Collagen type I receptor;
Isotype	Rabbit IgG
Host	Rabbit
Calculated MW	60878

Additional Information

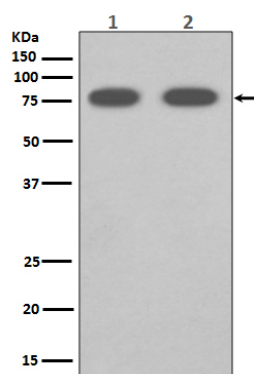
Dilution	WB 1:500~1:2000 IHC 1:50~1:200
Purification	Affinity-chromatography
Immunogen	A synthesized peptide derived from human Scavenging Receptor SR-BI
Description	Receptor for different ligands such as phospholipids, cholesterol ester, lipoproteins, phosphatidylserine and apoptotic cells. Probable receptor for HDL, located in particular region of the plasma membrane, called caveolae. Facilitates the flux of free and esterified cholesterol between the cell surface and extracellular donors and acceptors, such as HDL and to a lesser extent, apoB-containing lipoproteins and modified lipoproteins.
Storage Condition and Buffer	Rabbit IgG in phosphate buffered saline , pH 7.4, 150mM NaCl, 0.02% sodium azide and 50% glycerol. Store at +4°C short term. Store at -20°C long term. Avoid freeze / thaw cycle.

Protein Information

Name	SCARB1
Synonyms	CD36L1, CLA1
Function	Receptor for different ligands such as phospholipids, cholesterol ester, lipoproteins, phosphatidylserine and apoptotic cells (PubMed: 12016218 , PubMed: 12519372 , PubMed: 21226579). Receptor for HDL, mediating selective uptake of cholesteryl ether and HDL-dependent cholesterol efflux (PubMed: 26965621). Also facilitates the flux of free and esterified cholesterol between the cell surface and apoB-containing lipoproteins and modified lipoproteins, although less efficiently than HDL. May be involved in the phagocytosis of apoptotic cells, via its phosphatidylserine binding activity (PubMed: 12016218).

Cellular Location	Cell membrane; Multi-pass membrane protein. Membrane, caveola {ECO:0000250 UniProtKB:Q61009}; Multi-pass membrane protein Note=Predominantly localized to cholesterol and sphingomyelin-enriched domains within the plasma membrane, called caveolae
Tissue Location	Widely expressed.

Images



Western blot analysis of SCARB1 expression in (1) Human fetal liver lysate; (2) Mouse liver lysate.

Image not found : 202311/AP90397-IHC.jpg

Immunohistochemical analysis of paraffin-embedded human liver, using SCARB1 Antibody.

Please note: All products are 'FOR RESEARCH USE ONLY. NOT FOR USE IN DIAGNOSTIC OR THERAPEUTIC PROCEDURES'.