

alpha + beta Synuclein Antibody

Rabbit mAb

Catalog # AP90395

Product Information

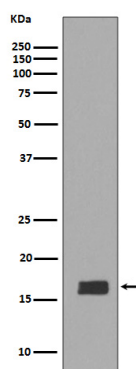
Application	WB, IF, FC, ICC
Primary Accession	P37840/Q16143
Reactivity	Rat, Human, Mouse
Clonality	Monoclonal
Other Names	alpha synuclein; beta synuclein ; NACP; PD1 ; SNCA; SNCB;
Isotype	Rabbit IgG
Host	Rabbit
Calculated MW	18 KDa

Additional Information

Dilution	WB 1:1000~1:2000 ICC/IF 1:50~1:200 FC 1:50
Purification	Affinity-chromatography
Immunogen	A synthesized peptide derived from human alpha + beta Synuclein
Description	Alpha-synuclein is a member of the synuclein family, which also includes beta- and gamma-synuclein. Synucleins are abundantly expressed in the brain and alpha- and beta-synuclein inhibit phospholipase D2 selectively.
Storage Condition and Buffer	Rabbit IgG in phosphate buffered saline , pH 7.4, 150mM NaCl, 0.02% sodium azide and 50% glycerol. Store at +4°C short term. Store at -20°C long term. Avoid freeze / thaw cycle.

Protein Information

Images



Western blot analysis of alpha + beta Synuclein expression in Mouse brain tissue lysate.

Please note: All products are 'FOR RESEARCH USE ONLY. NOT FOR USE IN DIAGNOSTIC OR THERAPEUTIC PROCEDURES'.