

Lactate Dehydrogenase Antibody

Rabbit mAb

Catalog # AP90387

Product Information

Application	WB, IHC, IF, FC, ICC, IP, IHF
Primary Accession	P00338
Reactivity	Rat, Human, Mouse
Clonality	Monoclonal
Other Names	LDHA; LDH-M; LDH1; PIG19; GSD11; TRG5; Proliferation inducing gene 19;
Isotype	Rabbit IgG
Host	Rabbit
Calculated MW	36689

Additional Information

Dilution	WB 1:500~1:2000 IHC 1:50~1:100 ICC/IF 1:50~1:100 IP 1:50 FC 1:50
Purification	Affinity-chromatography
Immunogen	A synthesized peptide derived from human Lactate Dehydrogenase
Description	Lactate dehydrogenase (LDH) catalyzes the interconversion of pyruvate and NADH to lactate and NAD ⁺ . When the oxygen supply is too low for mitochondrial ATP production, this reaction recycles NADH generated in glycolysis to NAD ⁺ , which reenters glycolysis. The major form of LDH found in muscle cells is the A (LDHA) isozyme.
Storage Condition and Buffer	Rabbit IgG in phosphate buffered saline , pH 7.4, 150mM NaCl, 0.02% sodium azide and 50% glycerol. Store at +4°C short term. Store at -20°C long term. Avoid freeze / thaw cycle.

Protein Information

Name	LDHA (HGNC:6535)
Function	Interconverts simultaneously and stereospecifically pyruvate and lactate with concomitant interconversion of NADH and NAD(+).
Cellular Location	Cytoplasm.
Tissue Location	Predominantly expressed in anaerobic tissues such as skeletal muscle and liver.

Images

Western blot analysis of LDHA expression in (1)Hela cell lysate;(2)Human heart lysate.

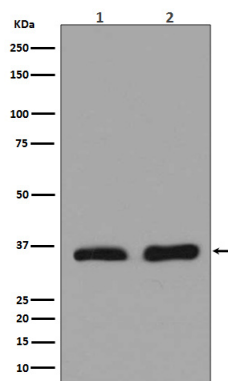


Image not found : 202311/AP90387-IHC.jpg

Immunohistochemical analysis of paraffin-embedded human colon, using Lactate Dehydrogenase Antibody.

Please note: All products are 'FOR RESEARCH USE ONLY. NOT FOR USE IN DIAGNOSTIC OR THERAPEUTIC PROCEDURES'.