

# CaMKII Antibody

Rabbit mAb

Catalog # AP90375

## Product Information

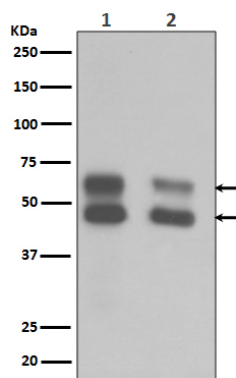
<b>Application</b>	WB, IHC, IF, ICC, IHF
<b>Primary Accession</b>	<a href="#">Q9UQM7/Q13554/Q13555/Q13557</a>
<b>Reactivity</b>	Rat, Human, Mouse
<b>Clonality</b>	Monoclonal
<b>Other Names</b>	CAMK2; Camk2a; CAMK2B; CAMK2D; CAMK2G; CAMKA;
<b>Isotype</b>	Rabbit IgG
<b>Host</b>	Rabbit
<b>Calculated MW</b>	45 KDa

## Additional Information

<b>Dilution</b>	WB 1:500~1:2000 IHC 1:50~1:200 ICC/IF 1:50~1:200
<b>Purification</b>	Affinity-chromatography
<b>Immunogen</b>	A synthesized peptide derived from human CaMKII
<b>Description</b>	CaM-kinase II (CAMK2) is a prominent kinase in the central nervous system that may function in long-term potentiation and neurotransmitter release. Member of the NMDAR signaling complex in excitatory synapses it may regulate NMDAR-dependent potentiation of the AMPAR and synaptic plasticity.
<b>Storage Condition and Buffer</b>	Rabbit IgG in phosphate buffered saline , pH 7.4, 150mM NaCl, 0.02% sodium azide and 50% glycerol. Store at +4°C short term. Store at -20°C long term. Avoid freeze / thaw cycle.

## Protein Information

## Images



Western blot analysis of CaMKII expression in (1) Mouse brain tissue lysate ;(2) Rat brain tissue lysate.

Image not found : 202311/AP90375-IHC.jpg

Immunohistochemical analysis of paraffin-embedded mouse colon, using CaMKII Antibody.

Image not found : 202311/AP90375-IF.jpg

Immunofluorescent analysis of PC-12 cells, using CaMKII Antibody .

Please note: All products are 'FOR RESEARCH USE ONLY. NOT FOR USE IN DIAGNOSTIC OR THERAPEUTIC PROCEDURES'.