

MMP1 Antibody

Rabbit mAb

Catalog # AP90369

Product Information

Application	WB, IHC, IF, FC, ICC, IHF
Primary Accession	P03956
Reactivity	Human
Clonality	Monoclonal
Other Names	MMP1;CLG;CLGN; Fibroblast collagenase; Matrix metalloprotease 1;
Isotype	Rabbit IgG
Host	Rabbit
Calculated MW	54007

Additional Information

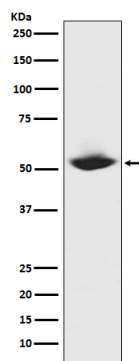
Dilution	WB 1:500~1:2000 IHC 1:50~1:200 ICC 1:50~1:200 FC 1:50
Purification	Affinity-chromatography
Immunogen	A synthesized peptide derived from human MMP1
Description	MMP1 Cleaves collagens of types I, II, and III at one site in the helical domain. Also cleaves collagens of types VII and X. In case of HIV infection, interacts and cleaves the secreted viral Tat protein, leading to a decrease in neuronal Tat's mediated neurotoxicity. Belongs to the peptidase M10A family.
Storage Condition and Buffer	Rabbit IgG in phosphate buffered saline , pH 7.4, 150mM NaCl, 0.02% sodium azide and 50% glycerol. Store at +4°C short term. Store at -20°C long term. Avoid freeze / thaw cycle.

Protein Information

Name	MMP1
Synonyms	CLG
Function	Cleaves collagens of types I, II, and III at one site in the helical domain. Also cleaves collagens of types VII and X (PubMed: 1645757 , PubMed: 2153297 , PubMed: 2557822). In case of HIV infection, interacts and cleaves the secreted viral Tat protein, leading to a decrease in neuronal Tat's mediated neurotoxicity (PubMed: 16807369).
Cellular Location	Secreted, extracellular space, extracellular matrix

Images

Western blot analysis of MMP1 expression in MMP1



recombinant protein.

Image not found : 202311/AP90369-IHC.jpg

Immunohistochemical analysis of paraffin-embedded human hepatocellular carcinoma, using MMP1 Antibody.

Please note: All products are 'FOR RESEARCH USE ONLY. NOT FOR USE IN DIAGNOSTIC OR THERAPEUTIC PROCEDURES'.