

Bim Antibody

Rabbit mAb

Catalog # AP90347

Product Information

Application	WB, IHC, IF, FC, ICC, IP, IHF
Primary Accession	O43521
Reactivity	Rat, Human, Mouse
Clonality	Monoclonal
Other Names	BAM; BIM; BOD; BimL; BimS; BimEL; BIM-beta6; BIM-beta7; BIM-alpha6;BCL2L11;
Isotype	Rabbit IgG
Host	Rabbit
Calculated MW	22171

Additional Information

Dilution	WB 1:500~1:1000 IHC 1:50~1:100 ICC/IF 1:50~1:100 IP 1:40 FC 1:50
Purification	Affinity-chromatography
Immunogen	A synthesized peptide derived from human Bim
Description	Bim a pro-apoptotic member of the BCL-2 protein family. Interacts with other members of the BCL-2 protein family, including BCL2, BCL2L1/BCL-X(L), and MCL1, and act as an apoptotic activator. Its expression can be induced by nerve growth factor (NGF), as well as by the forkhead transcription factor FKHR-L1, which suggests a role in neuronal and lymphocyte apoptosis.
Storage Condition and Buffer	Rabbit IgG in phosphate buffered saline , pH 7.4, 150mM NaCl, 0.02% sodium azide and 50% glycerol. Store at +4°C short term. Store at -20°C long term. Avoid freeze / thaw cycle.

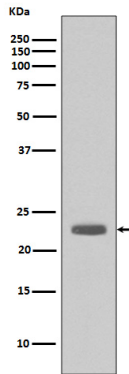
Protein Information

Name	BCL2L11
Synonyms	BIM
Function	Induces apoptosis and anoikis. Isoform BimL is more potent than isoform BimEL. Isoform Bim-alpha1, isoform Bim-alpha2 and isoform Bim-alpha3 induce apoptosis, although less potent than isoform BimEL, isoform BimL and isoform BimS. Isoform Bim-gamma induces apoptosis. Isoform Bim-alpha3 induces apoptosis possibly through a caspase- mediated pathway. Isoform BimAC and isoform BimABC lack the ability to induce apoptosis.
Cellular Location	Endomembrane system; Peripheral membrane protein. Note=Associated with intracytoplasmic membranes. [Isoform BimL]: Mitochondrion. [Isoform Bim-alpha1]: Mitochondrion.

Tissue Location

Isoform BimEL, isoform BimL and isoform BimS are the predominant isoforms and are widely expressed with tissue-specific variation. Isoform Bim-gamma is most abundantly expressed in small intestine and colon, and in lower levels in spleen, prostate, testis, heart, liver and kidney.

Images



Western blot analysis of Bim expression in A431 cell lysate.

Image not found : 202311/AP90347-IHC.jpg

Immunohistochemical analysis of paraffin-embedded human cervix cancer, using Bim Antibody.

Image not found : 202311/AP90347-IF.jpg

Immunofluorescent analysis of Raji cells, using Bim Antibody.

Please note: All products are 'FOR RESEARCH USE ONLY. NOT FOR USE IN DIAGNOSTIC OR THERAPEUTIC PROCEDURES'.