

TTF1 Antibody

Rabbit mAb

Catalog # AP90318

Product Information

Application	WB, IHC, IF, FC, ICC, IHF
Primary Accession	P43699
Reactivity	Rat, Human, Mouse
Clonality	Monoclonal
Other Names	BCH; BHC; NK-2; TEBP; TTF1; NKX2A; TITF1; TTF-1; NKX2.1;
Isotype	Rabbit IgG
Host	Rabbit
Calculated MW	38596

Additional Information

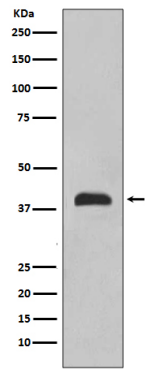
Dilution	WB 1:500~1:2000 IHC 1:50~1:200 ICC/IF 1:50~1:200 FC 1:50
Purification	Affinity-chromatography
Immunogen	A synthesized peptide derived from human TTF1
Description	This gene encodes a protein initially identified as a thyroid-specific transcription factor. The encoded protein binds to the thyroglobulin promoter and regulates the expression of thyroid-specific genes but has also been shown to regulate the expression of genes involved in morphogenesis. Mutations and deletions in this gene are associated with benign hereditary chorea, choreoathetosis, congenital hypothyroidism, and neonatal respiratory distress, and may be associated with thyroid cancer.
Storage Condition and Buffer	Rabbit IgG in phosphate buffered saline , pH 7.4, 150mM NaCl, 0.02% sodium azide and 50% glycerol. Store at +4°C short term. Store at -20°C long term. Avoid freeze / thaw cycle.

Protein Information

Name	NKX2-1 (HGNC:11825)
Synonyms	NKX2A, TITF1, TTF1
Function	Transcription factor that binds and activates the promoter of thyroid specific genes such as thyroglobulin, thyroperoxidase, and thyrotropin receptor. Crucial in the maintenance of the thyroid differentiation phenotype. May play a role in lung development and surfactant homeostasis. Forms a regulatory loop with GRHL2 that coordinates lung epithelial cell morphogenesis and differentiation. Activates the transcription of GNRHR and plays a role in enhancing the circadian oscillation of its gene expression. Represses the transcription of the circadian transcriptional repressor NR1D1 (By similarity).
Cellular Location	Nucleus {ECO:0000250 UniProtKB:P50220}.

Tissue Location Thyroid and lung.

Images



Western blot analysis of TTF1 expression in 293 cell lysate.

Image not found : 202311/AP90318-IHC.jpg

Immunohistochemical analysis of paraffin-embedded human thyroid, using TTF1 Antibody.

Image not found : 202311/AP90318-IF.jpg

Immunofluorescent analysis of Hela cells, using TTF1 Antibody .

Please note: All products are 'FOR RESEARCH USE ONLY. NOT FOR USE IN DIAGNOSTIC OR THERAPEUTIC PROCEDURES'.