

CD86 Antibody

Rabbit mAb

Catalog # AP90285

Product Information

Application	WB, IHC, IF, FC, ICC, IP, IHF
Primary Accession	P42081
Reactivity	Rat, Human, Mouse
Clonality	Monoclonal
Other Names	CD86;B7-2;B70;CD28LG2;LAB72;MGC34413; CTLA4 counter receptor B72; CLS1; Ly58; MB7;
Isotype	Rabbit IgG
Host	Rabbit
Calculated MW	37682

Additional Information

Dilution	WB 1:1000~1:2000 IHC 1:50~1:200 ICC/IF 1:50~1:200 IP 1:50 FC 1:50
Purification	Affinity-chromatography
Immunogen	A synthesized peptide derived from human CD86
Description	Receptor involved in the costimulatory signal essential for T-lymphocyte proliferation and interleukin-2 production, by binding CD28 or CTLA-4. May play a critical role in the early events of T-cell activation and costimulation of naive T-cells, such as deciding between immunity and anergy that is made by T-cells within 24 hours after activation. Isoform 2 interferes with the formation of CD86 clusters, and thus acts as a negative regulator of T-cell activation.
Storage Condition and Buffer	Rabbit IgG in phosphate buffered saline , pH 7.4, 150mM NaCl, 0.02% sodium azide and 50% glycerol. Store at +4°C short term. Store at -20°C long term. Avoid freeze / thaw cycle.

Protein Information

Name	CD86
Synonyms	CD28LG2
Function	Costimulatory molecule that belongs to the immunoglobulin superfamily that plays an important role in T-lymphocyte activation (PubMed: 12196291 , PubMed: 7694363). Acts as the primary auxiliary signal augmenting the MHC/TCR signal in naive T-cells by acting as a ligand for the CD28 receptor which is constitutively expressed on the cell surface of T-cells (PubMed: 12196291 , PubMed: 7694363). May play a critical role in the early events of T-cell activation and costimulation of naive T-cells, such as deciding between immunity and anergy that is made by T-cells within 24 hours after activation (PubMed: 7527824). Also involved in the regulation of B cells

function, plays a role in regulating the level of IgG(1) produced. Upon CD40 engagement, activates NF-kappa-B signaling pathway via phospholipase C and protein kinase C activation (By similarity). Also acts as an inhibitor of T-cell activation by acting as a ligand for CTLA4, a decoy receptor, thereby blocking CD28-mediated T-cell priming (PubMed:[11279501](#)).

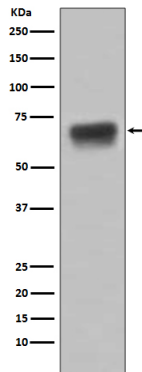
Cellular Location

Cell membrane; Single-pass type I membrane protein

Tissue Location

Expressed on the surfaces of antigen-presenting cells.

Images



Western blot analysis of CD86 expression in Raji cell lysate.

Image not found : 202311/AP90285-IHC.jpg

Immunohistochemical analysis of paraffin-embedded human tonsil, using CD86 Antibody .

Image not found : 202311/AP90285-IF.jpg

Immunofluorescent analysis of K562 cells, using CD86 Antibody .

Please note: All products are 'FOR RESEARCH USE ONLY. NOT FOR USE IN DIAGNOSTIC OR THERAPEUTIC PROCEDURES'.