

# HSPA12A Antibody

Rabbit mAb

Catalog # AP90263

## Product Information

<b>Application</b>	WB, IHC, IF, ICC, IP, IHF
<b>Primary Accession</b>	<a href="#">O43301</a>
<b>Reactivity</b>	Rat, Human, Mouse
<b>Clonality</b>	Monoclonal
<b>Other Names</b>	FLJ13874 antibody;Heat shock 70 kDa protein 12A antibody;heat shock 70kD protein 12A antibody;heat shock 70kDa protein 12A antibody;HS12A_HUMAN antibody;Hspa12a antibody;KIAA0417 antibody
<b>Isotype</b>	Rabbit IgG
<b>Host</b>	Rabbit
<b>Calculated MW</b>	74978

## Additional Information

<b>Dilution</b>	WB 1:500~1:2000 IHC 1:50~1:200 ICC/IF 1:50~1:200 IP 1:50~1:100
<b>Purification</b>	Affinity-chromatography
<b>Immunogen</b>	A synthesized peptide derived from human HSPA12A
<b>Description</b>	HSPA12A is an ATP binding protein.
<b>Storage Condition and Buffer</b>	Rabbit IgG in phosphate buffered saline , pH 7.4, 150mM NaCl, 0.02% sodium azide and 50% glycerol. Store at +4°C short term. Store at -20°C long term. Avoid freeze / thaw cycle.

## Protein Information

<b>Name</b>	HSPA12A
<b>Synonyms</b>	KIAA0417
<b>Function</b>	Adapter protein for SORL1, but not SORT1. Delays SORL1 internalization and affects SORL1 subcellular localization.
<b>Cellular Location</b>	Cytoplasm {ECO:0000250 UniProtKB:Q8K0U4}. Nucleus {ECO:0000250 UniProtKB:Q8K0U4}
<b>Tissue Location</b>	Widely expressed with highest levels in brain, kidney and muscle.

## Images

Western blot analysis of HSPA12A expression in U-87 MG cell lysate.

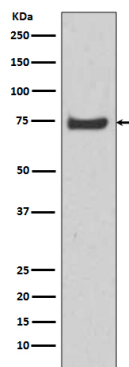


Image not found : 202311/AP90263-IHC.jpg

Immunohistochemical analysis of paraffin-embedded mouse brain, using HSPA12A Antibody.

Please note: All products are 'FOR RESEARCH USE ONLY. NOT FOR USE IN DIAGNOSTIC OR THERAPEUTIC PROCEDURES'.