

# MHC class 1 Antibody

Rabbit mAb

Catalog # AP90248

## Product Information

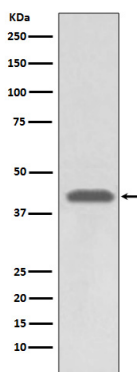
<b>Application</b>	WB, IHC, IF, FC, ICC, IP, IHF
<b>Primary Accession</b>	<a href="#">P01891</a>
<b>Reactivity</b>	Human
<b>Clonality</b>	Monoclonal
<b>Other Names</b>	Aw-68;HLA class I histocompatibility antigen, A-28 alpha chain;MHC class I antigen A*68;HLA-A; MHC class I antigen HLA A heavy chain;
<b>Isotype</b>	Rabbit IgG
<b>Host</b>	Rabbit
<b>Calculated MW</b>	41 KDa

## Additional Information

<b>Dilution</b>	WB 1:500~1:2000 IHC 1:50~1:200 ICC/IF 1:50~1:200 IP 1:50 FC 1:50
<b>Purification</b>	Affinity-chromatography
<b>Immunogen</b>	A synthesized peptide derived from human MHC class 1
<b>Description</b>	MHC class 1 is involved in the presentation of foreign antigens to the immune system.
<b>Storage Condition and Buffer</b>	Rabbit IgG in phosphate buffered saline , pH 7.4, 150mM NaCl, 0.02% sodium azide and 50% glycerol. Store at +4°C short term. Store at -20°C long term. Avoid freeze / thaw cycle.

## Protein Information

## Images



Western blot analysis of MHC class 1 expression in A549 cell lysate.

Image not found : 202311/AP90248-IHC.jpg

Immunohistochemical analysis of paraffin-embedded human thyroid carcinoma, using MHC class 1 Antibody.

Please note: All products are 'FOR RESEARCH USE ONLY. NOT FOR USE IN DIAGNOSTIC OR THERAPEUTIC PROCEDURES'.