

CD34 Antibody

Rabbit mAb

Catalog # AP90246

Product Information

Application	WB, IHC, IF, FC, ICC, IP, IHF
Primary Accession	P28906
Reactivity	Rat, Human, Mouse, Dog
Clonality	Monoclonal
Other Names	Hematopoietic progenitor cell antigen CD34; CD34
Isotype	Rabbit IgG
Host	Rabbit
Calculated MW	40716

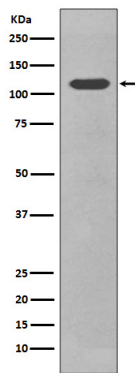
Additional Information

Dilution	WB 1:500~1:2000 IHC 1:50~1:200 ICC/IF 1:50~1:200 IP 1:50 FC 1:50
Purification	Affinity-chromatography
Immunogen	A synthesized peptide derived from human CD34
Description	Possible adhesion molecule with a role in early hematopoiesis by mediating the attachment of stem cells to the bone marrow extracellular matrix or directly to stromal cells. Could act as a scaffold for the attachment of lineage specific glycans, allowing stem cells to bind to lectins expressed by stromal cells or other marrow components. Presents carbohydrate ligands to selectins.
Storage Condition and Buffer	Rabbit IgG in phosphate buffered saline , pH 7.4, 150mM NaCl, 0.02% sodium azide and 50% glycerol. Store at +4°C short term. Store at -20°C long term. Avoid freeze / thaw cycle.

Protein Information

Name	CD34
Function	Possible adhesion molecule with a role in early hematopoiesis by mediating the attachment of stem cells to the bone marrow extracellular matrix or directly to stromal cells. Could act as a scaffold for the attachment of lineage specific glycans, allowing stem cells to bind to lectins expressed by stromal cells or other marrow components. Presents carbohydrate ligands to selectins.
Cellular Location	Membrane; Single-pass type I membrane protein.
Tissue Location	Selectively expressed on hematopoietic progenitor cells and the small vessel endothelium of a variety of tissues

Images



Western blot analysis of CD34 in expression NIH/3T3 cell lysate.

Image not found : 202311/AP90246-IHC.jpg

Immunohistochemical analysis of paraffin-embedded human kidney, using CD34 Antibody.

Image not found : 202311/AP90246-IF.jpg

Immunofluorescent analysis of HUVEC cells, using CD34 Antibody .

Please note: All products are 'FOR RESEARCH USE ONLY. NOT FOR USE IN DIAGNOSTIC OR THERAPEUTIC PROCEDURES'.