

# Bcl-6 Antibody

Rabbit mAb

Catalog # AP90234

## Product Information

---

<b>Application</b>	WB, IHC, IF, ICC, IP, IHF
<b>Primary Accession</b>	<a href="#">P41182</a>
<b>Reactivity</b>	Human
<b>Clonality</b>	Monoclonal
<b>Other Names</b>	B-cell lymphoma 6 protein; BCL-6; B-cell lymphoma 5 protein; BCL-5; Protein LAZ-3; Zinc finger and BTB domain-containing protein 27; Zinc finger protein 51; BCL6; BCL5; LAZ3; ZBTB27; ZNF51
<b>Isotype</b>	Rabbit IgG
<b>Host</b>	Rabbit
<b>Calculated MW</b>	78846

## Additional Information

---

<b>Dilution</b>	WB 1:500~1:2000 IHC 1:50~1:200 ICC/IF 1:50~1:200 IP 1:50
<b>Purification</b>	Affinity-chromatography
<b>Immunogen</b>	A synthesized peptide derived from human Bcl6
<b>Description</b>	Bcl-6, a transcriptional repressor, binds Stat recognition-like DNA elements and influences germinal center development and cell differentiation. Additionally, Bcl-6 negatively regulates NFκB expression, thereby inhibiting NFκB-mediated cellular functions. HDAC- and silent information regulator (SIR)-2-dependent acetylation of Bcl-6 causes downregulation of activity by inhibiting the ability of Bcl-6 to recruit complexes containing histone deacetylases (HDACs).
<b>Storage Condition and Buffer</b>	Rabbit IgG in phosphate buffered saline , pH 7.4, 150mM NaCl, 0.02% sodium azide and 50% glycerol. Store at +4°C short term. Store at -20°C long term. Avoid freeze / thaw cycle.

## Protein Information

---

<b>Name</b>	BCL6
<b>Synonyms</b>	BCL5, LAZ3, ZBTB27, ZNF51
<b>Function</b>	Transcriptional repressor mainly required for germinal center (GC) formation and antibody affinity maturation which has different mechanisms of action specific to the lineage and biological functions. Forms complexes with different corepressors and histone deacetylases to repress the transcriptional expression of different subsets of target genes. Represses its target genes by binding directly to the DNA sequence 5'-TTCCTAGAA-3' (BCL6-binding site) or indirectly by repressing the transcriptional activity of transcription factors. In GC B-cells, represses genes that function in

differentiation, inflammation, apoptosis and cell cycle control, also autoregulates its transcriptional expression and up-regulates, indirectly, the expression of some genes important for GC reactions, such as AICDA, through the repression of microRNAs expression, like miR155. An important function is to allow GC B-cells to proliferate very rapidly in response to T- cell dependent antigens and tolerate the physiological DNA breaks required for immunoglobulin class switch recombination and somatic hypermutation without inducing a p53/TP53-dependent apoptotic response. In follicular helper CD4(+) T-cells (T(FH) cells), promotes the expression of T(FH)-related genes but inhibits the differentiation of T(H)1, T(H)2 and T(H)17 cells. Also required for the establishment and maintenance of immunological memory for both T- and B-cells. Suppresses macrophage proliferation through competition with STAT5 for STAT- binding motifs binding on certain target genes, such as CCL2 and CCND2. In response to genotoxic stress, controls cell cycle arrest in GC B- cells in both p53/TP53-dependendent and -independent manners. Besides, also controls neurogenesis through the alteration of the composition of NOTCH-dependent transcriptional complexes at selective NOTCH targets, such as HES5, including the recruitment of the deacetylase SIRT1 and resulting in an epigenetic silencing leading to neuronal differentiation.

**Cellular Location**

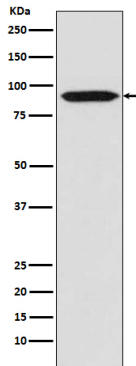
Nucleus

**Tissue Location**

Expressed in germinal center T- and B-cells and in primary immature dendritic cells.

**Images**

---



Western blot analysis of Bcl6 in expression Daudi cell lysate.

Image not found : 202311/AP90234-IHC.jpg

Immunohistochemical analysis of paraffin-embedded human tonsil, using Bcl-6 Antibody.

Image not found : 202311/AP90234-IF.jpg

Immunofluorescent analysis of Ramos cells, using Bcl-6 Antibody .

Please note: All products are 'FOR RESEARCH USE ONLY. NOT FOR USE IN DIAGNOSTIC OR THERAPEUTIC PROCEDURES'.