

# MEK1/2 Antibody

Rabbit mAb

Catalog # AP90219

## Product Information

---

<b>Application</b>	WB, IHC, IF, ICC, IP, IHF
<b>Primary Accession</b>	<a href="#">Q02750/P36507</a>
<b>Reactivity</b>	Rat, Human, Mouse
<b>Clonality</b>	Monoclonal
<b>Other Names</b>	ERK activator kinase 1, MAP kinase kinase 1, MAP2K1, MAPK/ERK kinase 1, MAPKK 1, MAPKK1, MEK1, MP2K1, PRKMK1, kinase MEK1
<b>Isotype</b>	Rabbit IgG
<b>Host</b>	Rabbit
<b>Calculated MW</b>	44 KDa

## Additional Information

---

<b>Dilution</b>	WB 1:5000~1:10000 IHC 1:100~1:500 ICC/IF 1:50~1:100 IP 1:50~1:100
<b>Purification</b>	Affinity-chromatography
<b>Immunogen</b>	A synthesized peptide derived from human MEK1/2
<b>Description</b>	Dual specificity protein kinase which acts as an essential component of the MAP kinase signal transduction pathway. Binding of extracellular ligands such as growth factors, cytokines and hormones to their cell-surface receptors activates RAS and this initiates RAF1 activation. RAF1 then further activates the dual-specificity protein kinases MAP2K1/MEK1 and MAP2K2/MEK2.
<b>Storage Condition and Buffer</b>	Rabbit IgG in phosphate buffered saline , pH 7.4, 150mM NaCl, 0.02% sodium azide and 50% glycerol. Store at +4°C short term. Store at -20°C long term. Avoid freeze / thaw cycle.

## Protein Information

---

## Images

---

Western blot analysis of MEK1/2 expression in (1) 293T cell lysate; (2) A549 cell lysate.

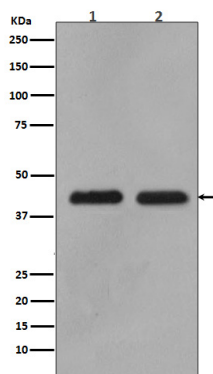


Image not found : 202311/AP90219-IHC.jpg

Immunohistochemical analysis of paraffin-embedded human kidney, using MEK1/2 Antibody.

Image not found : 202311/AP90219-IF.jpg

Immunofluorescent analysis of Hela cells, using MEK1/2 Antibody .

Please note: All products are 'FOR RESEARCH USE ONLY. NOT FOR USE IN DIAGNOSTIC OR THERAPEUTIC PROCEDURES'.