

# CD20 Antibody

Rabbit mAb

Catalog # AP90208

## Product Information

---

<b>Application</b>	WB, IHC, FC
<b>Primary Accession</b>	<a href="#">P11836</a>
<b>Reactivity</b>	Human
<b>Clonality</b>	Monoclonal
<b>Other Names</b>	B1; S7; Bp35; CD20; MS4A2; LEU-16; MS4A1
<b>Isotype</b>	Rabbit IgG
<b>Host</b>	Rabbit
<b>Calculated MW</b>	33077

## Additional Information

---

<b>Dilution</b>	WB 1:500~1:2000 IHC 1:50~1:200 FC 1:50~1:200
<b>Purification</b>	Affinity-chromatography
<b>Immunogen</b>	A synthesized peptide derived from human CD20
<b>Description</b>	This protein may be involved in the regulation of B-cell activation and proliferation. CD20 (MS4A1, membrane-spanning 4-domains, subfamily A, member 1) is a member of the membrane-spanning 4A gene family. Members of this nascent protein family are characterized by common structural features and similar intron/exon splice boundaries and display unique expression patterns among hematopoietic cells and nonlymphoid tissues.
<b>Storage Condition and Buffer</b>	Rabbit IgG in phosphate buffered saline , pH 7.4, 150mM NaCl, 0.02% sodium azide and 50% glycerol. Store at +4°C short term. Store at -20°C long term. Avoid freeze / thaw cycle.

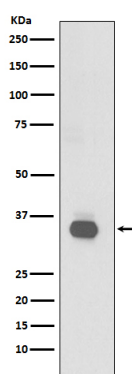
## Protein Information

---

<b>Name</b>	MS4A1
<b>Synonyms</b>	CD20
<b>Function</b>	B-lymphocyte-specific membrane protein that plays a role in the regulation of cellular calcium influx necessary for the development, differentiation, and activation of B-lymphocytes (PubMed: <a href="#">12920111</a> , PubMed: <a href="#">3925015</a> , PubMed: <a href="#">7684739</a> ). Functions as a store-operated calcium (SOC) channel component promoting calcium influx after activation by the B-cell receptor/BCR (PubMed: <a href="#">12920111</a> , PubMed: <a href="#">18474602</a> , PubMed: <a href="#">7684739</a> ).
<b>Cellular Location</b>	Cell membrane; Multi-pass membrane protein. Cell membrane; Lipid-anchor. Note=Constitutively associated with membrane rafts.
<b>Tissue Location</b>	Expressed on B-cells.

## Images

---



Western blot analysis of CD20 expression in Raji cell lysate.

Image not found : 202311/AP90208-IHC.jpg

Immunohistochemical analysis of paraffin-embedded human tonsil, using CD20 Antibody.

Please note: All products are 'FOR RESEARCH USE ONLY. NOT FOR USE IN DIAGNOSTIC OR THERAPEUTIC PROCEDURES'.